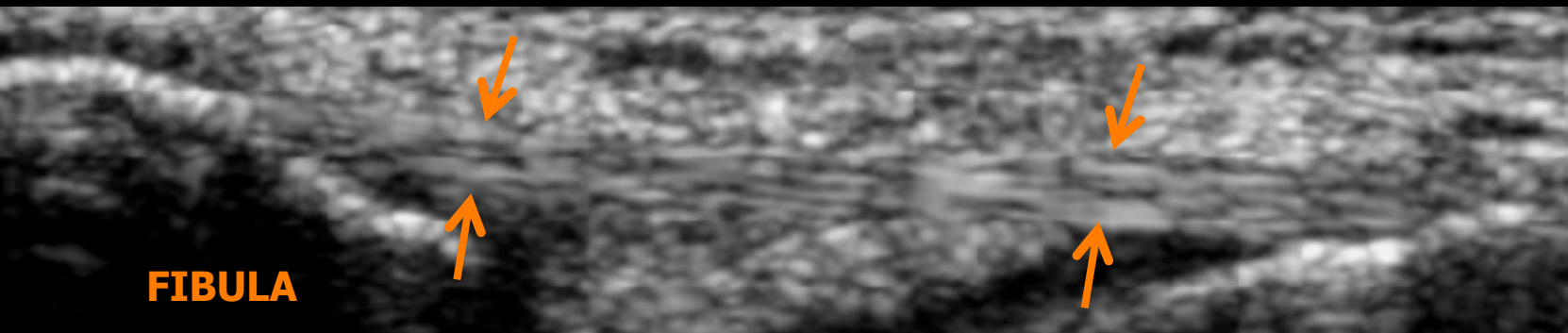
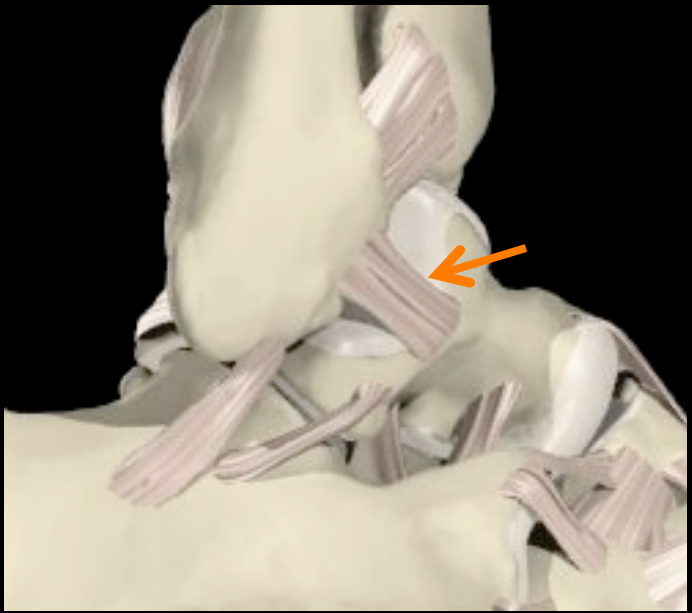


# Mécanisme Lésionnel = Flexion – Varus - Equin



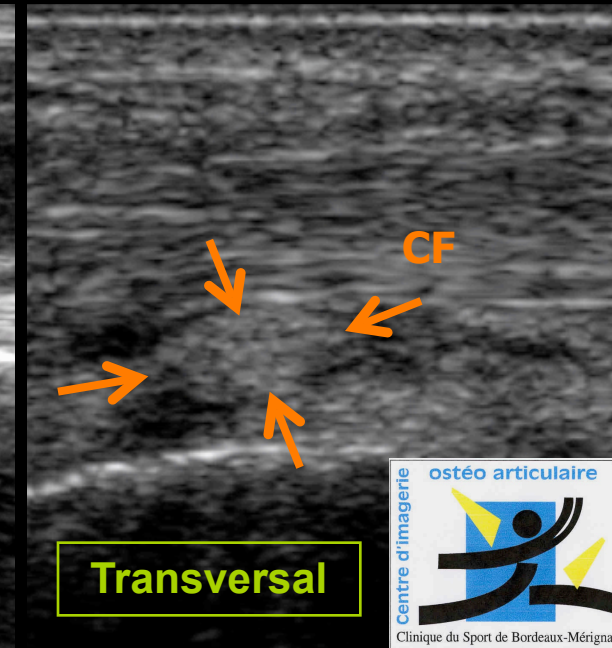
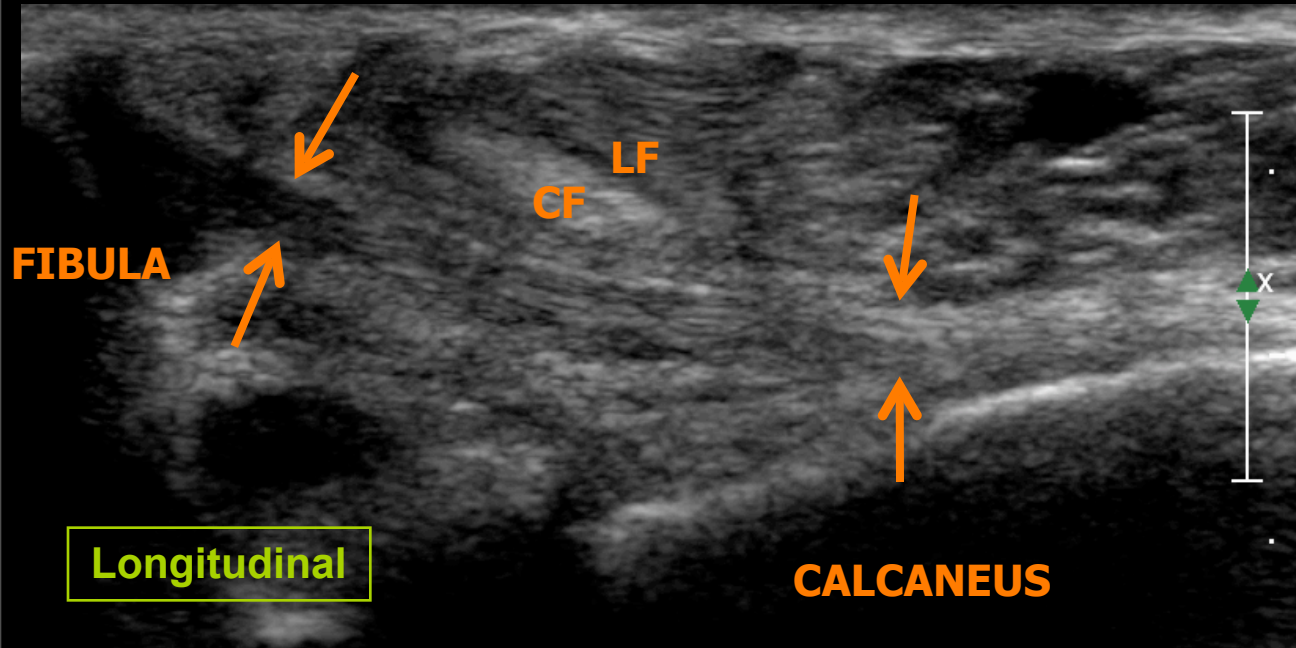
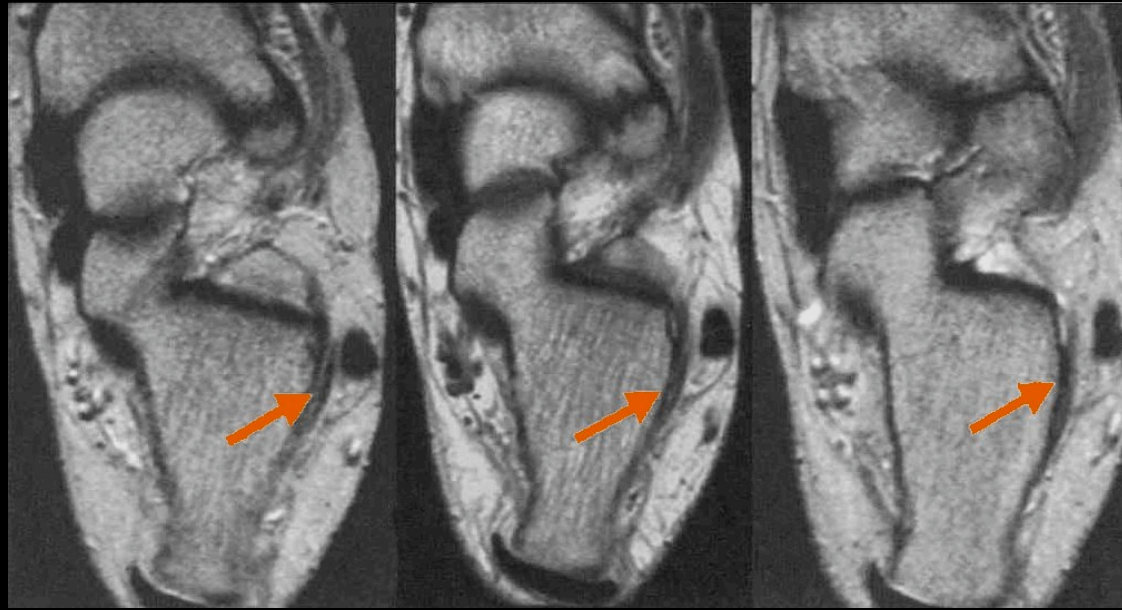
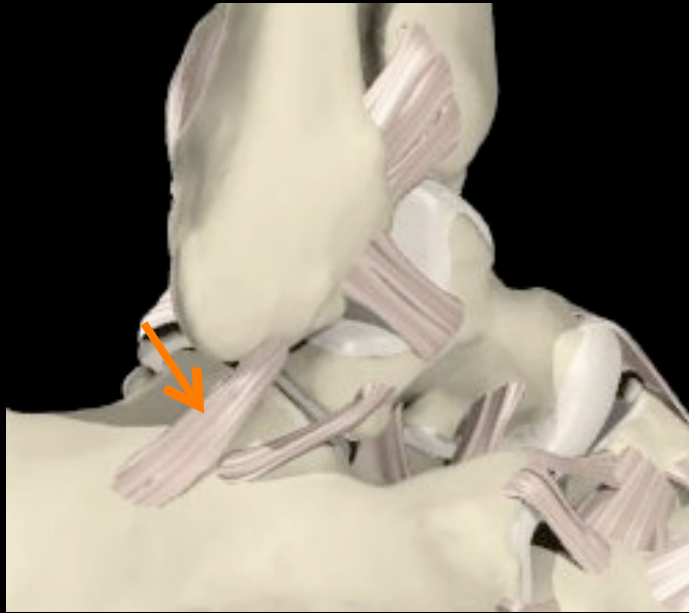
# LTFA : Ligament Talo Fibulaire Antérieur



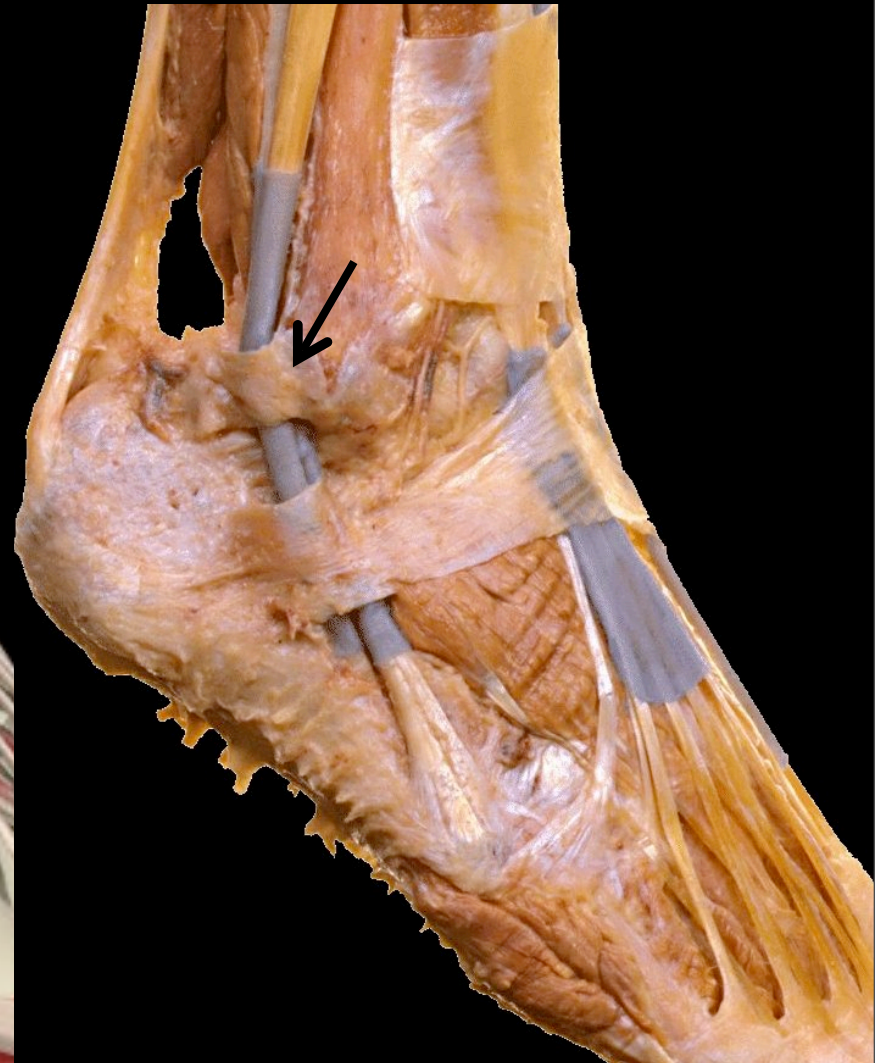
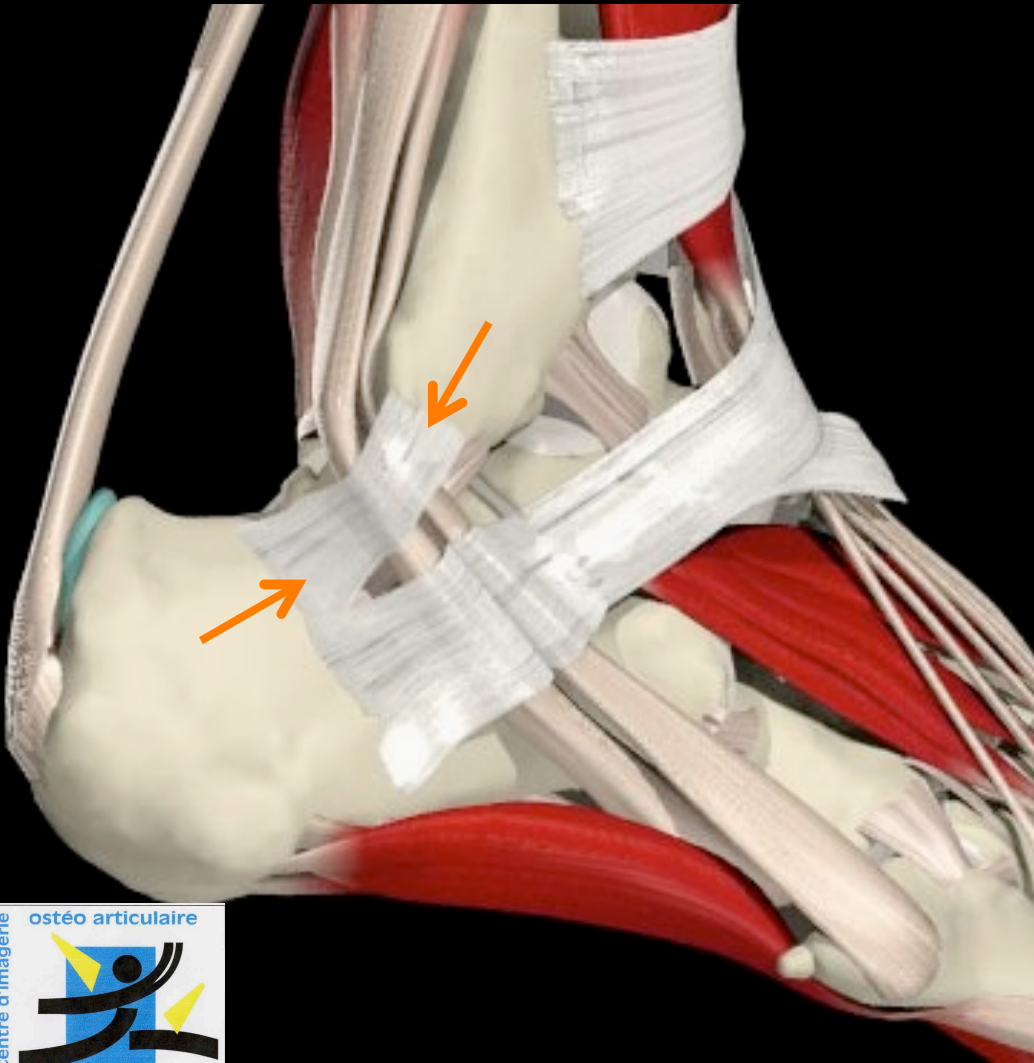
FIBULA

TALUS

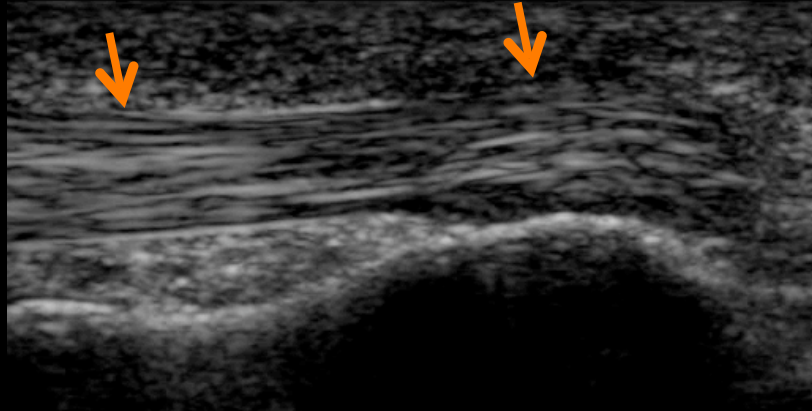
# LFC : Ligament Fibulo Calcanéen)



# Retinaculum supérieur des fibulaires

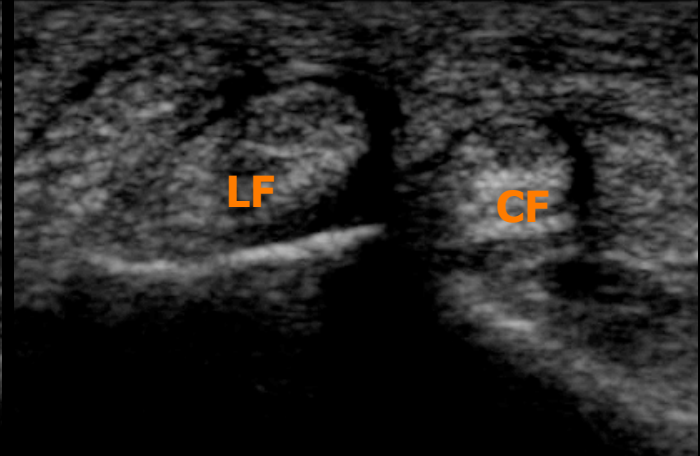


# Tendons Fibulaires

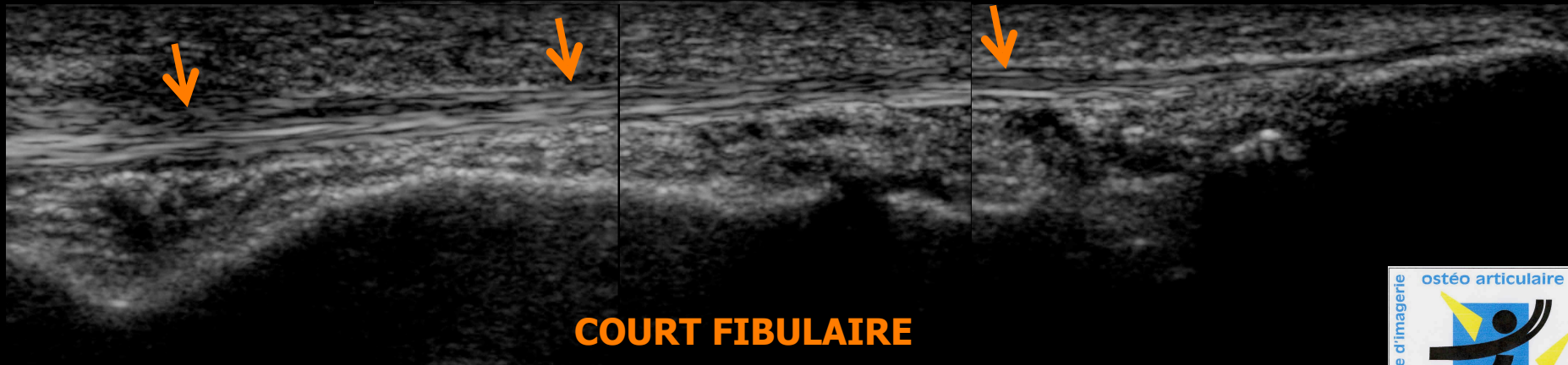


**LONG FIBULAIRE**

Longitudinal

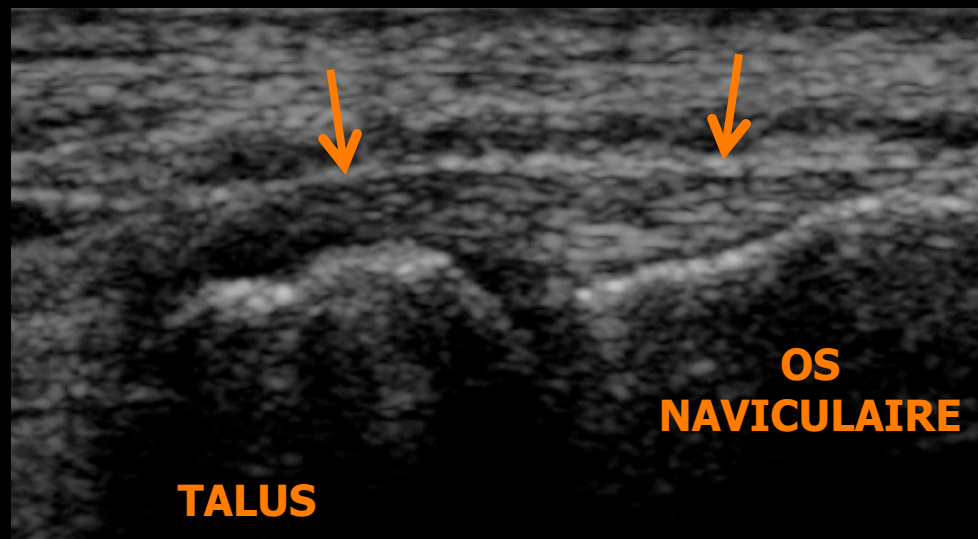


Transversal

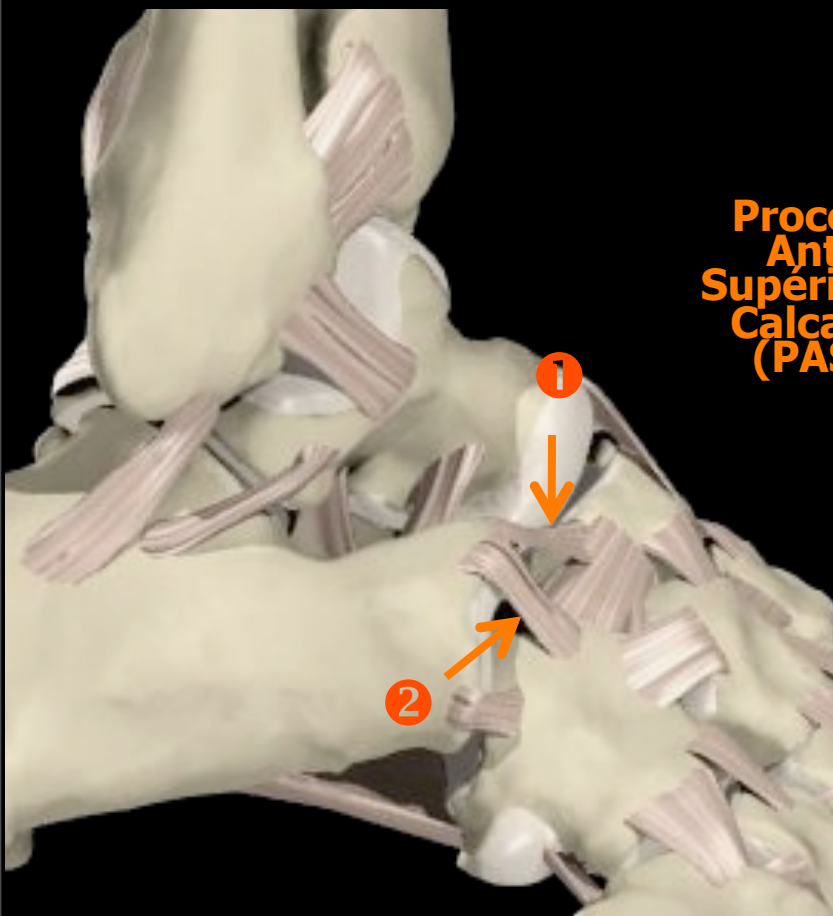


**COURT FIBULAIRE**

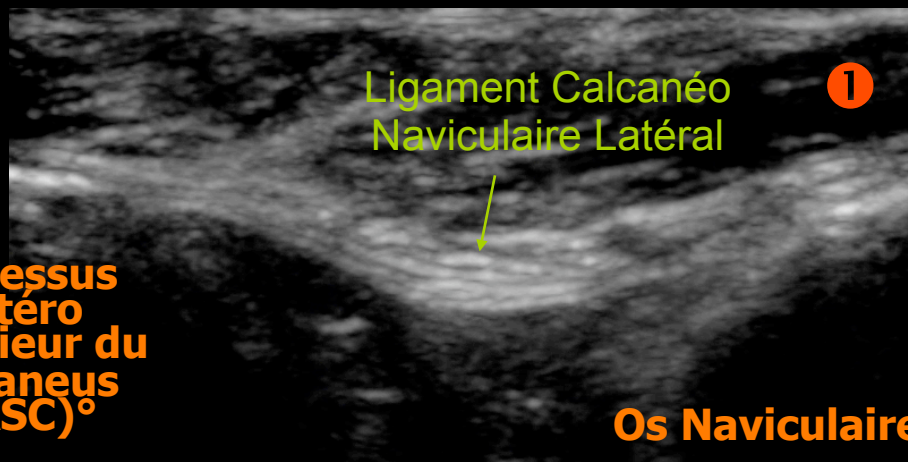
# Chopart Supérieur : Ligament Talo Naviculaire Supérieur



# Chopart Médian : Ligament Bifurqué

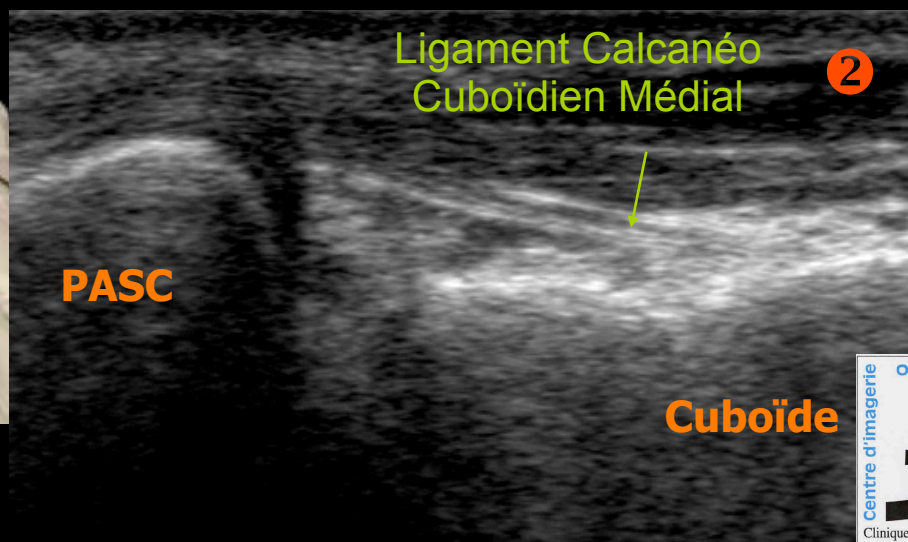


**Processus  
Antéro  
Supérieur du  
Calcaneus  
(PASC)<sup>o</sup>**



**Ligament Calcanéo  
Naviculaire Latéral**

**Os Naviculaire**

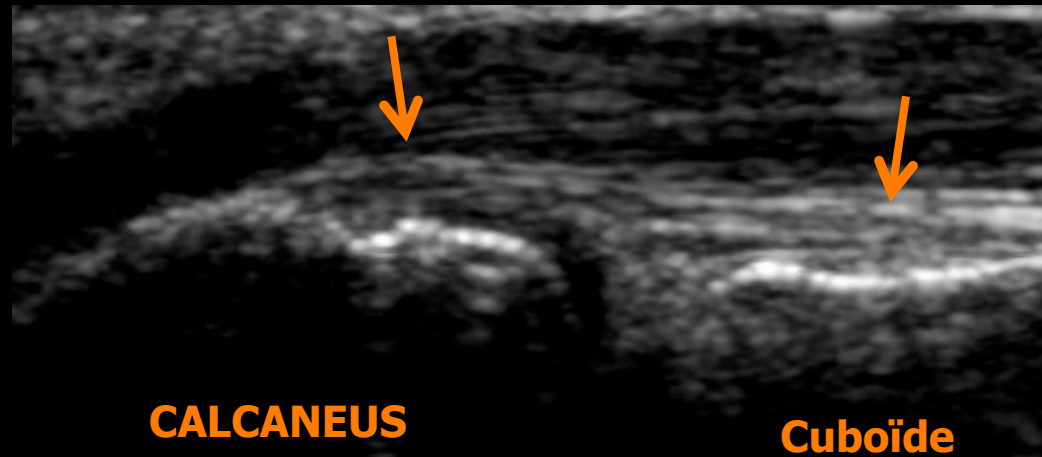


**Ligament Calcanéo  
Cuboïdien Médial**

**PASC**

**Cuboïde**

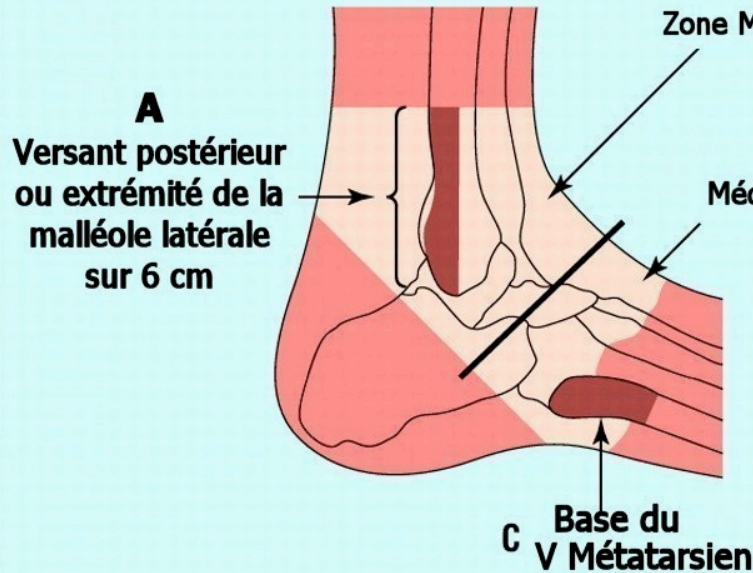
# Chopart Latéral : Ligament Calcanéo Cuboïdien Latéral



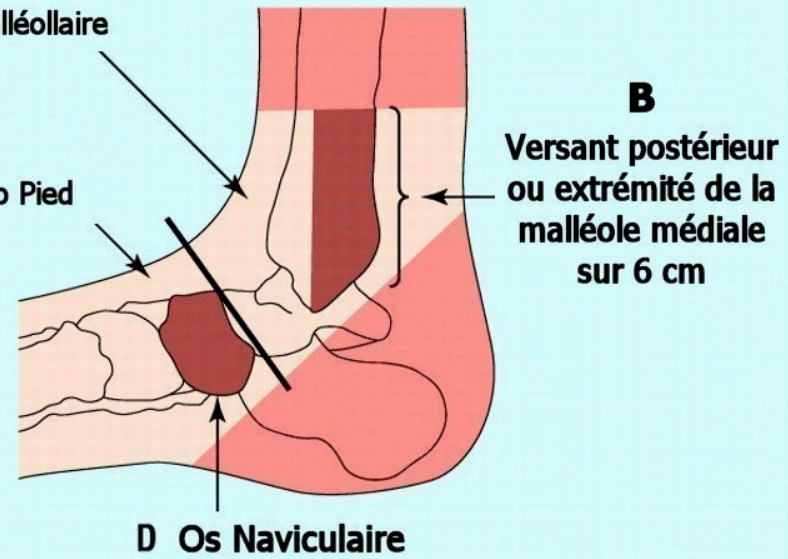


# Critères d'OTTAWA

## Vue Latérale



## Vue Médiale



Bilan radiographique requis si malléole fibulaire douloureuse associée à l'un de ces signes :

- \* douleur à la palpation de A
- \* douleur à la palpation de B
- \* impossibilité de faire quelques pas dans le service d'urgence

Bilan radiographique requis si malléole tibiale ou médio pied douloureux associé à l'un de ces signes :

- \* douleur à la palpation de C
- \* douleur à la palpation de D
- \* impossibilité de faire quelques pas dans le service d'urgence

# Bilan Radiographique Optimisé

- 4 Incidences (J.-C. DOSCH *Centre de Traumatologie et d'Orthopédie de Strasbourg*):



Face Rotation  
Interne en Talus



Face Rotation  
Interne en Equin



Profil Strict



Profil Décalé

# Bilan Echographique

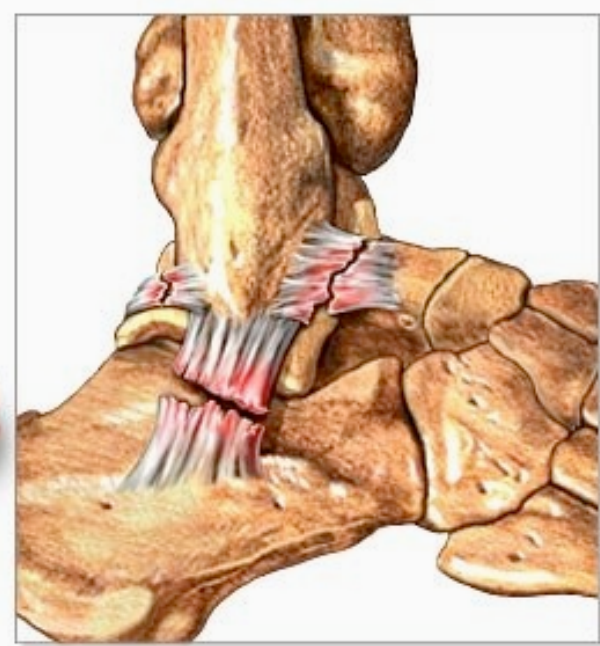




Type I



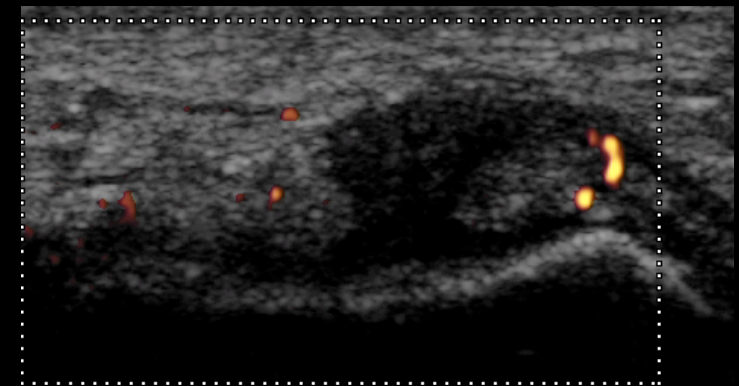
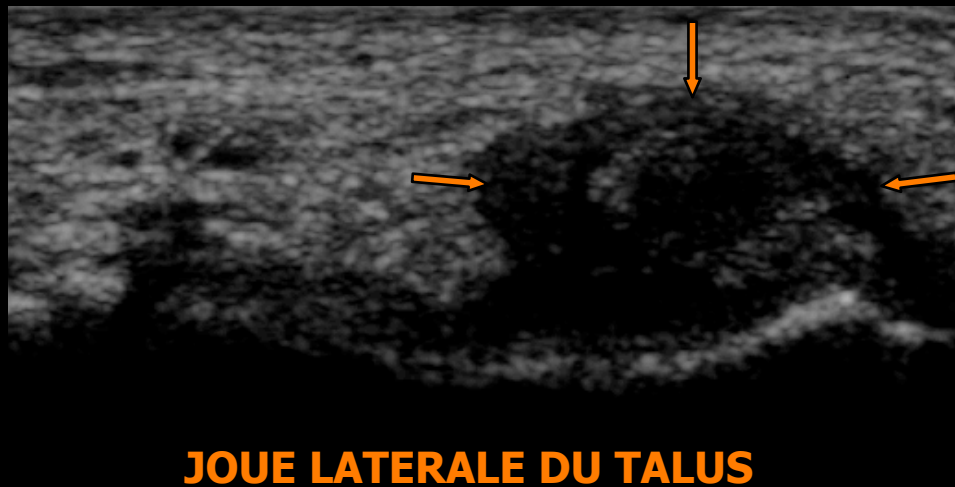
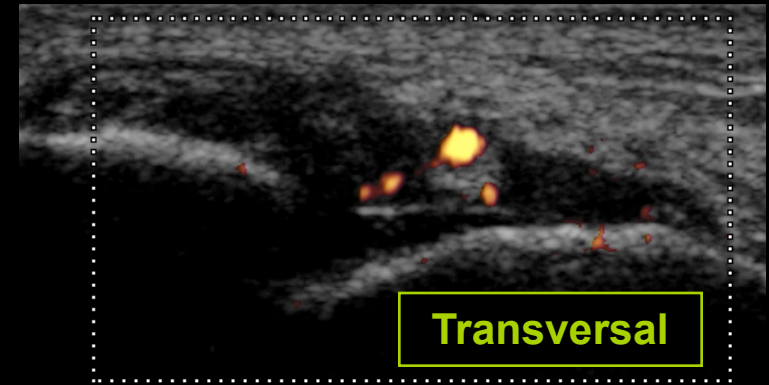
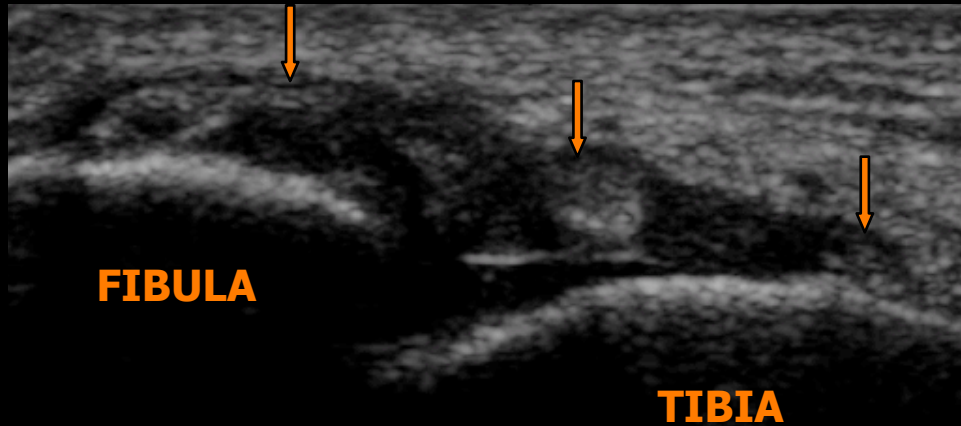
Type III



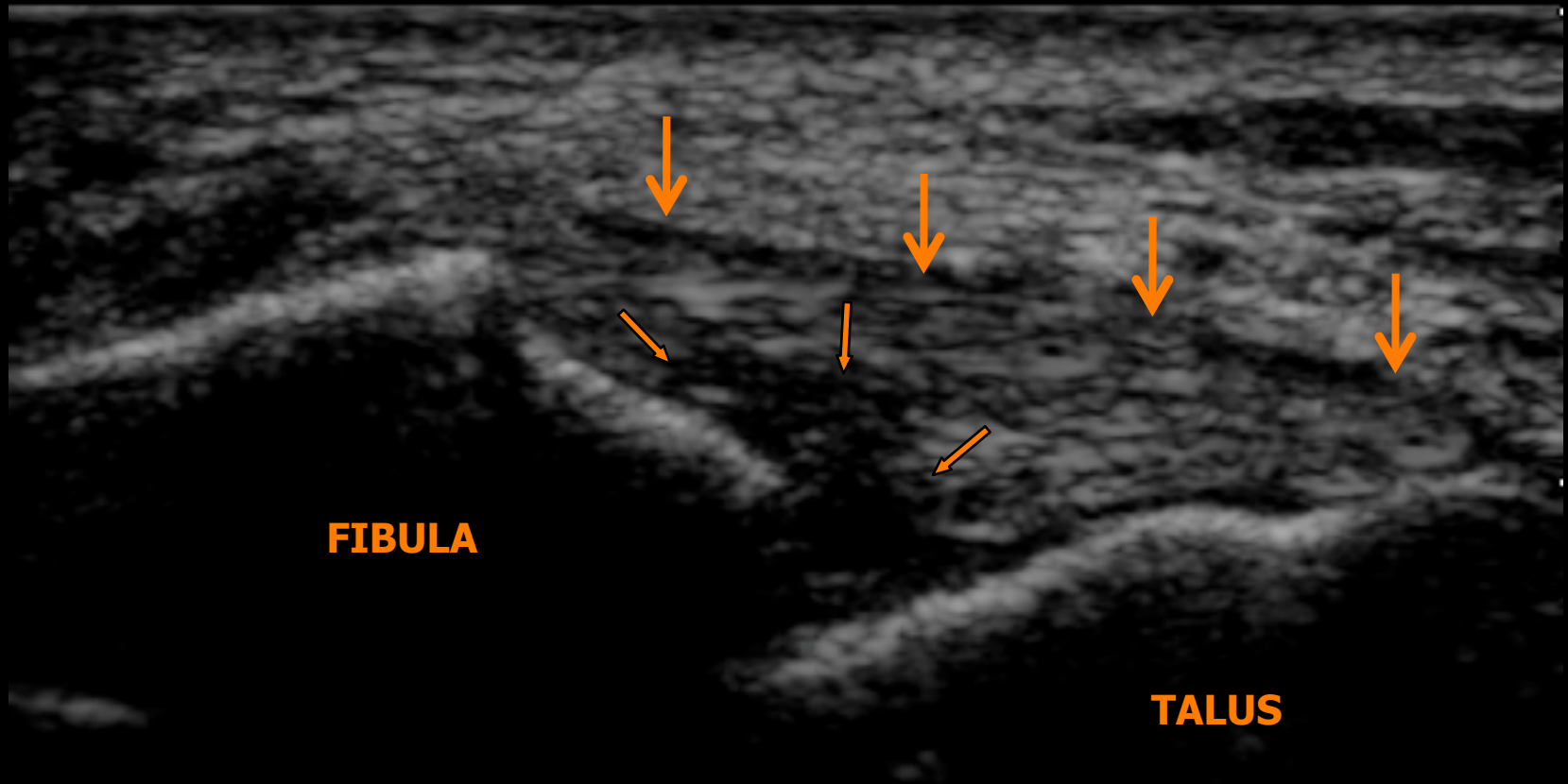
Type II



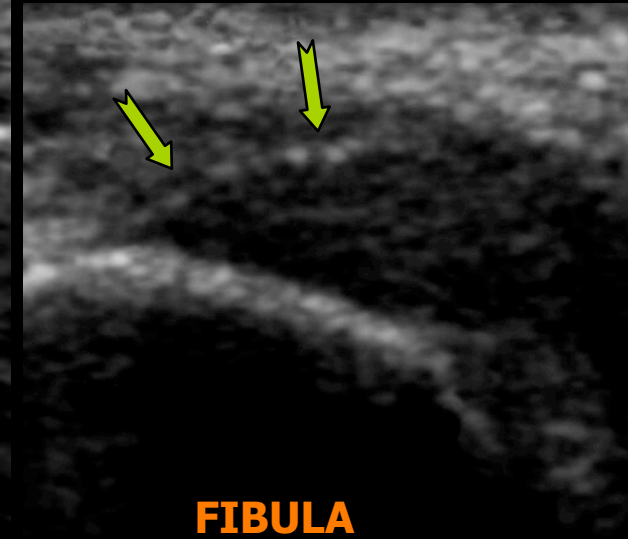
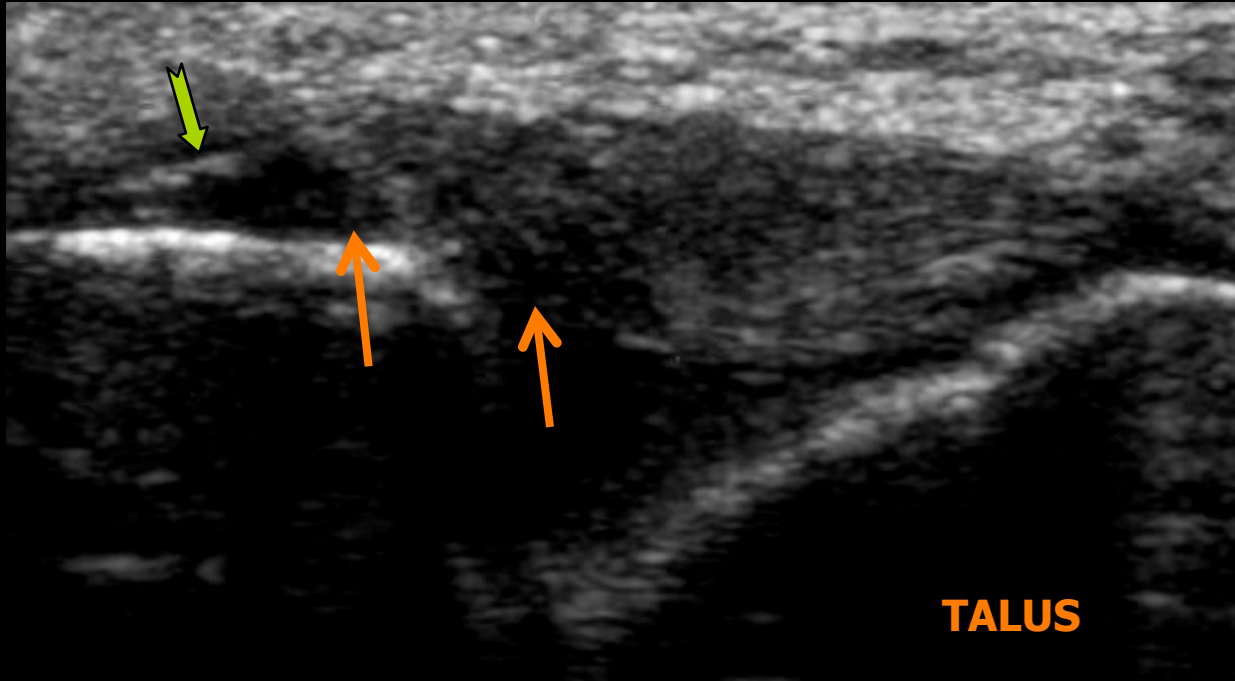
# Infiltration Ecchymotique



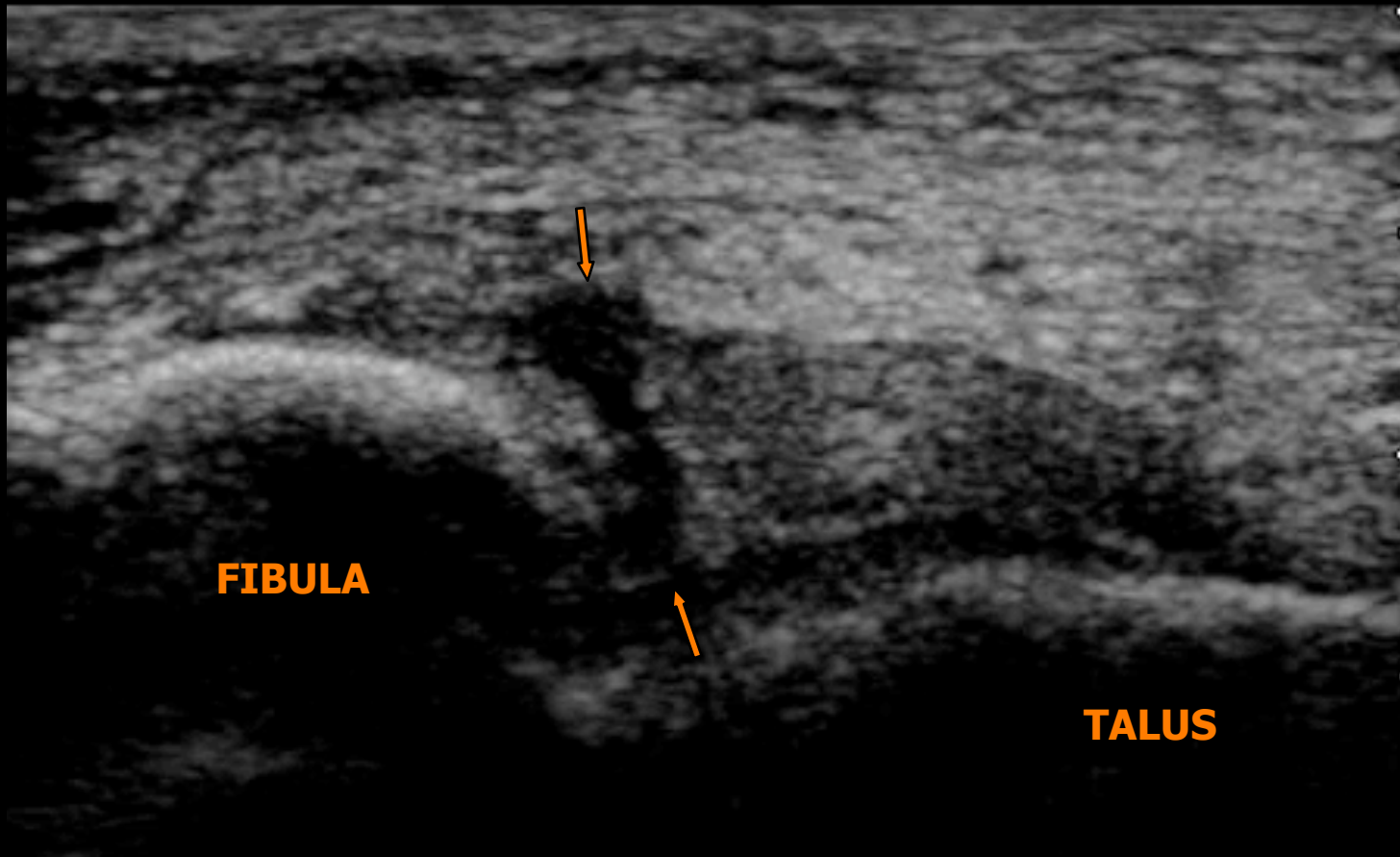
# Rupture Partielle



# Rupture Partielle

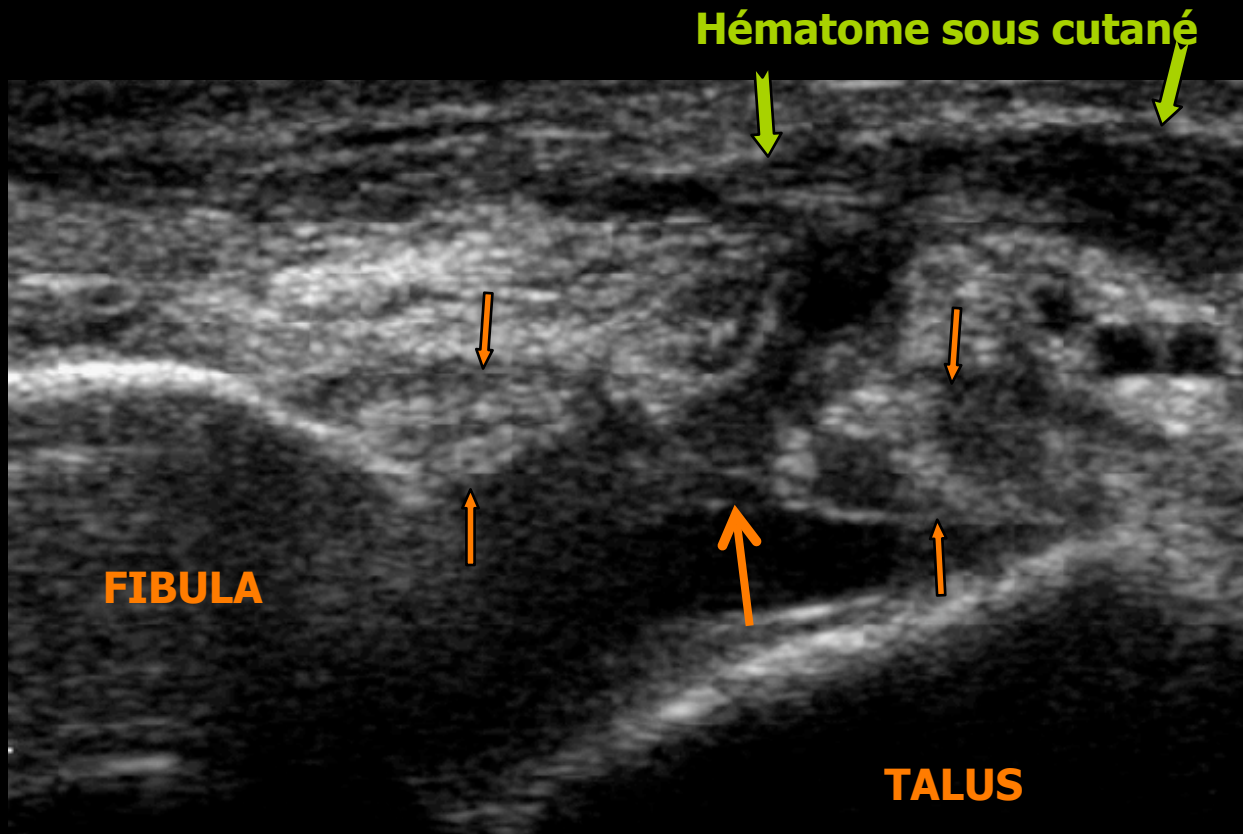


# Rupture Transfixiante

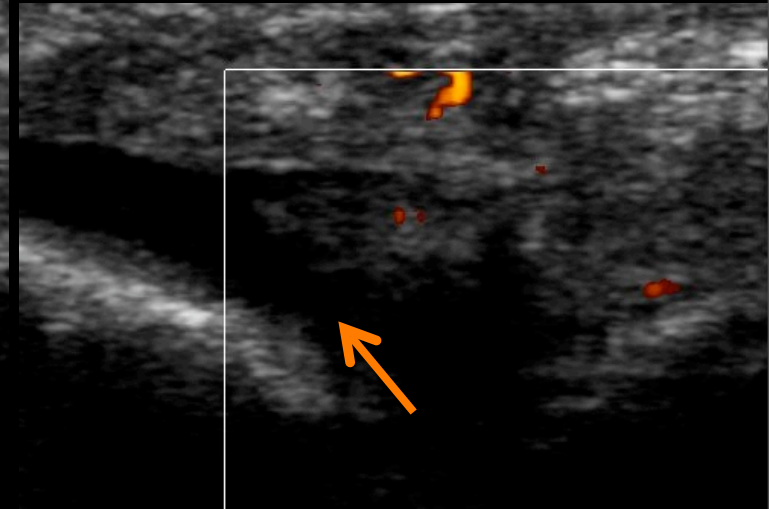
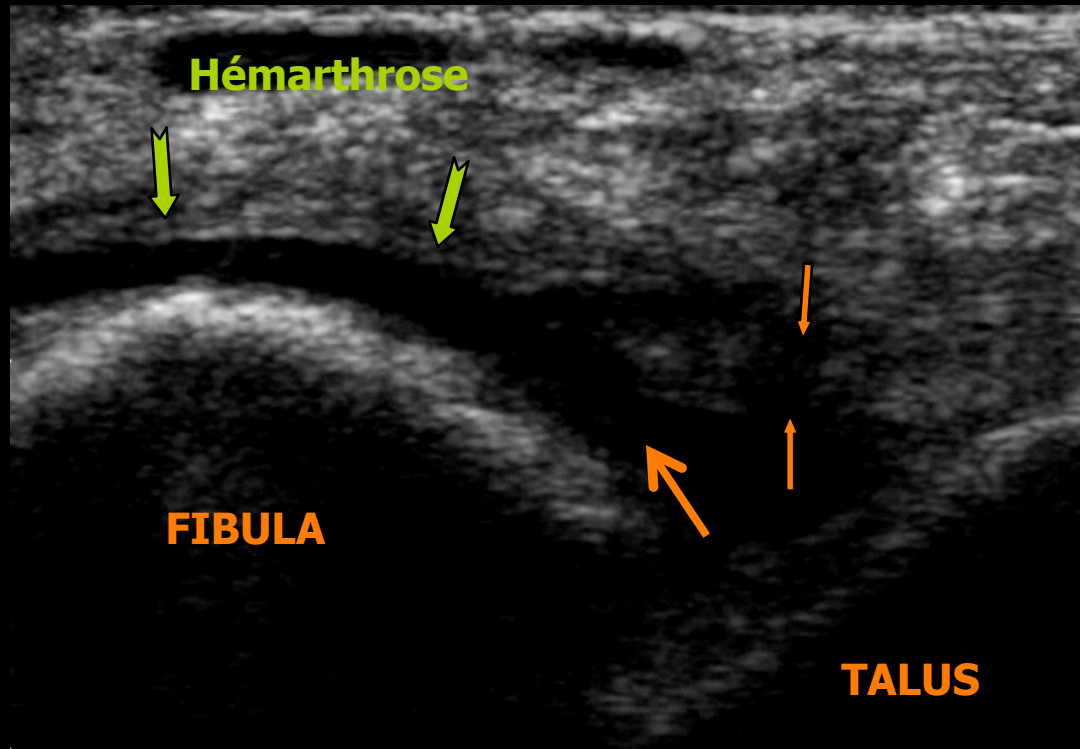




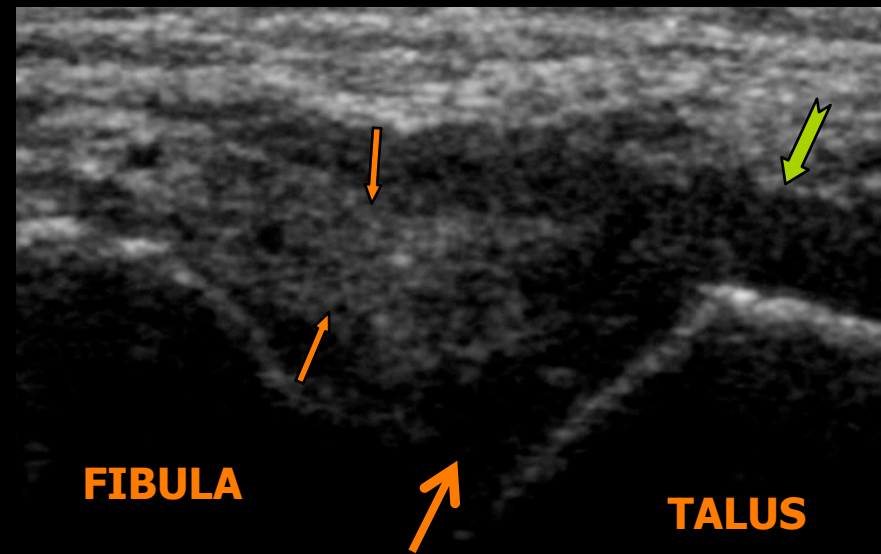
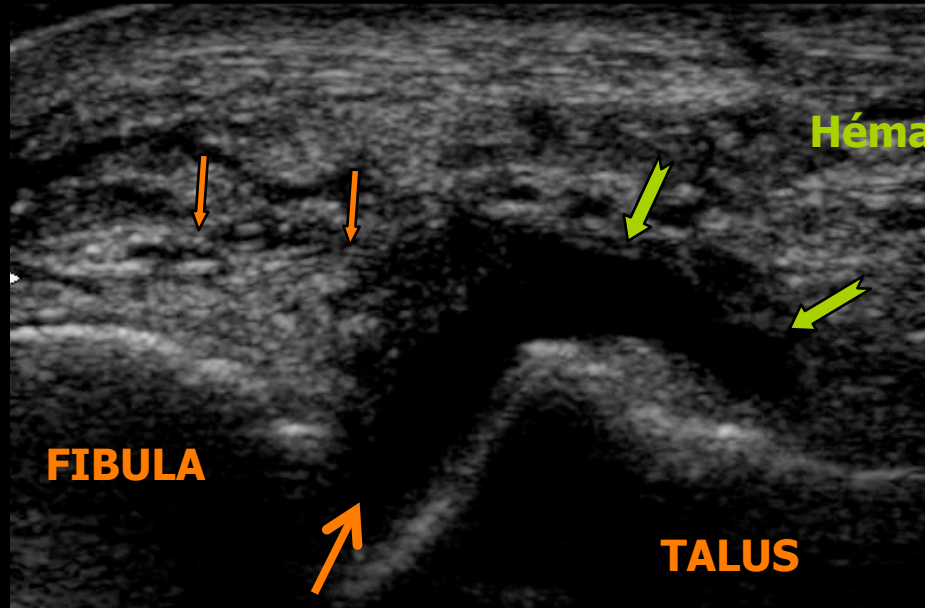
# Atteinte complète du LTFA



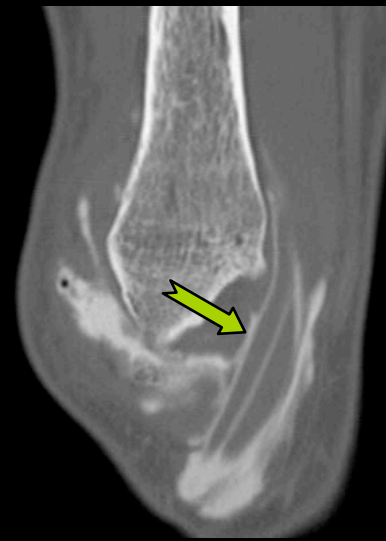
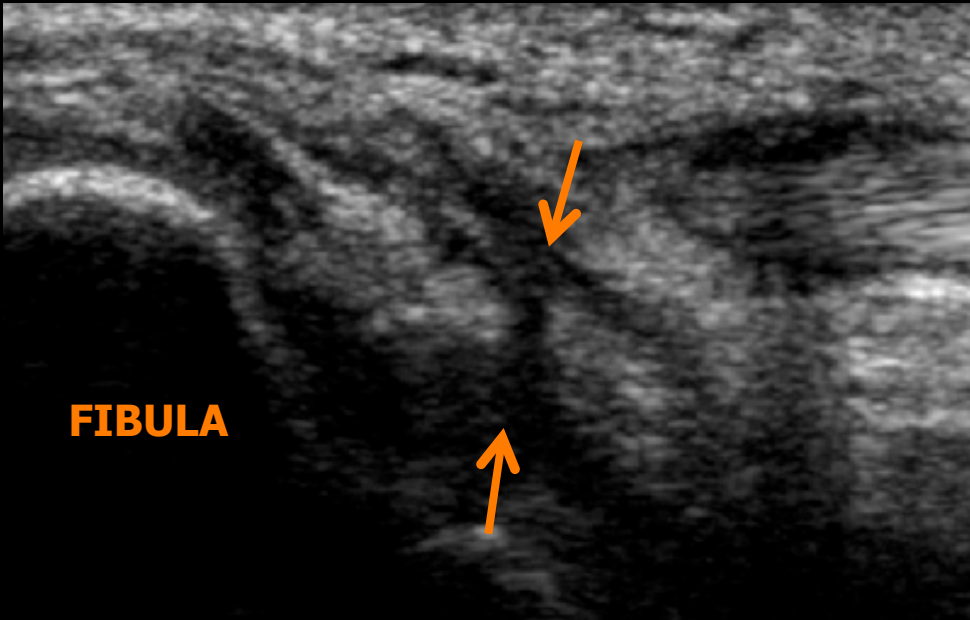
# Atteinte complète du LTFA



# Atteinte complète du LTFA

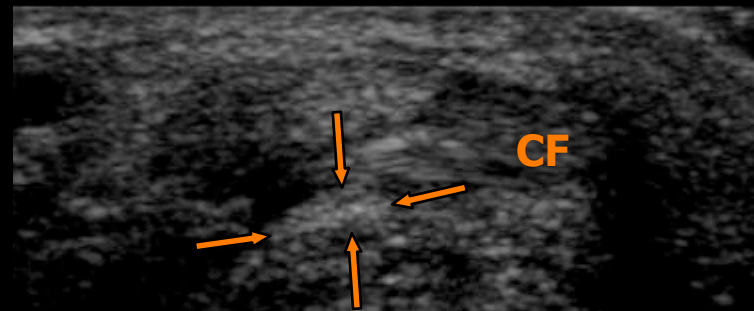
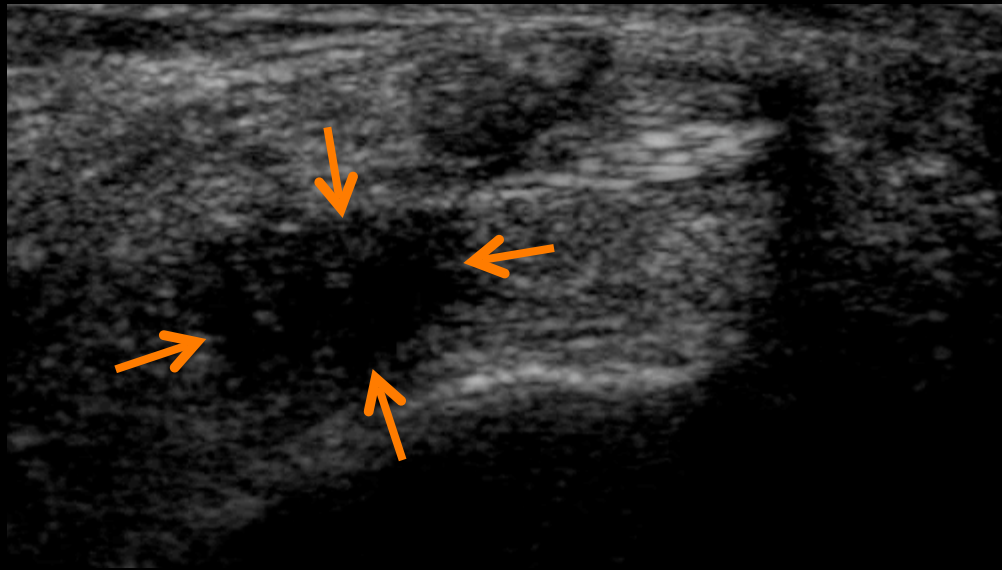
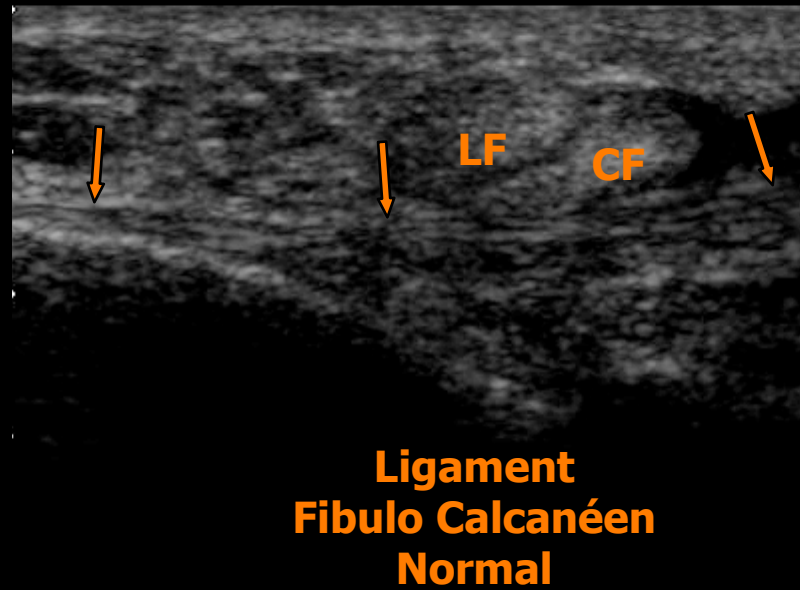
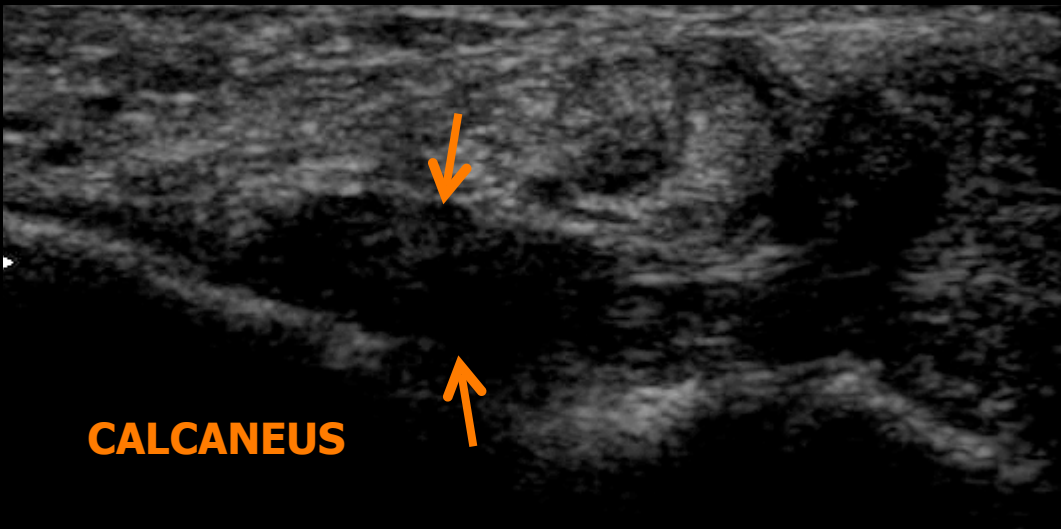


# Atteinte du LFC



**Ligament Fibulo Calcaneus normal**

# Atteinte du LFC

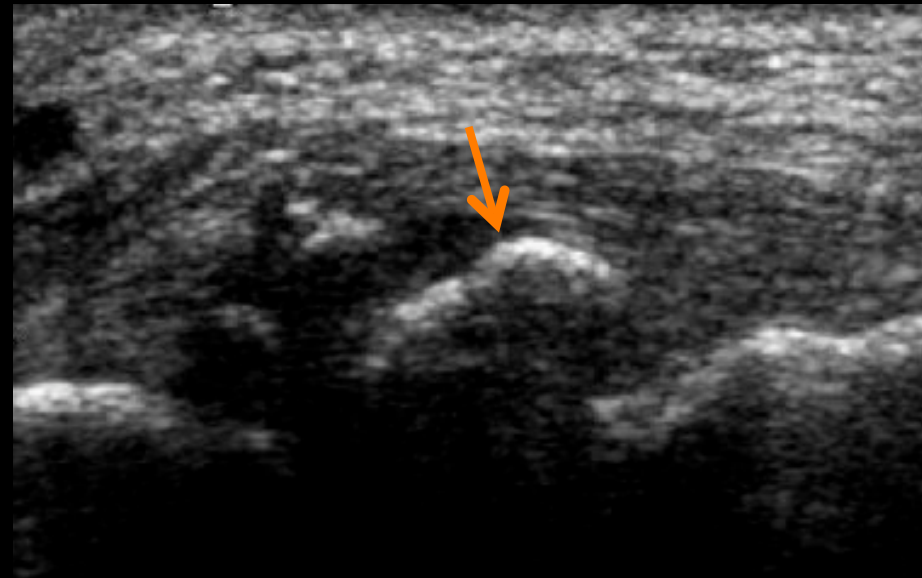


# Lésions associées



**Avulsion Osseuse Talaire  
Du LTFA**

**Avulsion Osseuse Fibulaire  
Du LTFA**

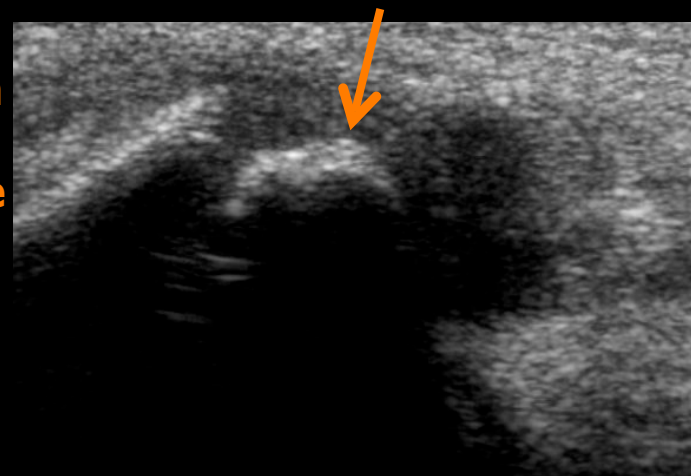


# Lésions associées

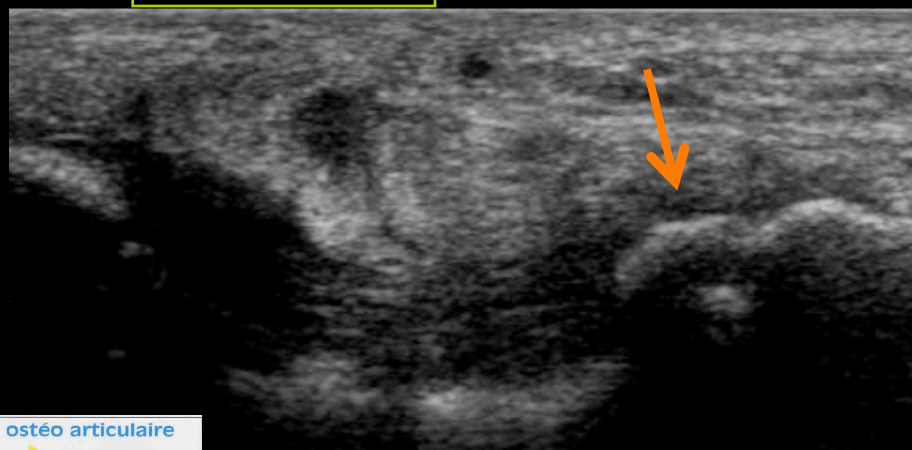


Longitudinal

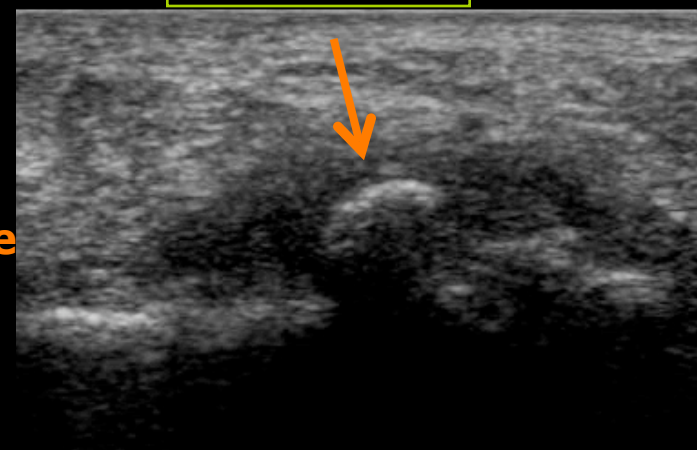
**Avulsion  
Osseuse  
Fibulaire  
Du LFC**



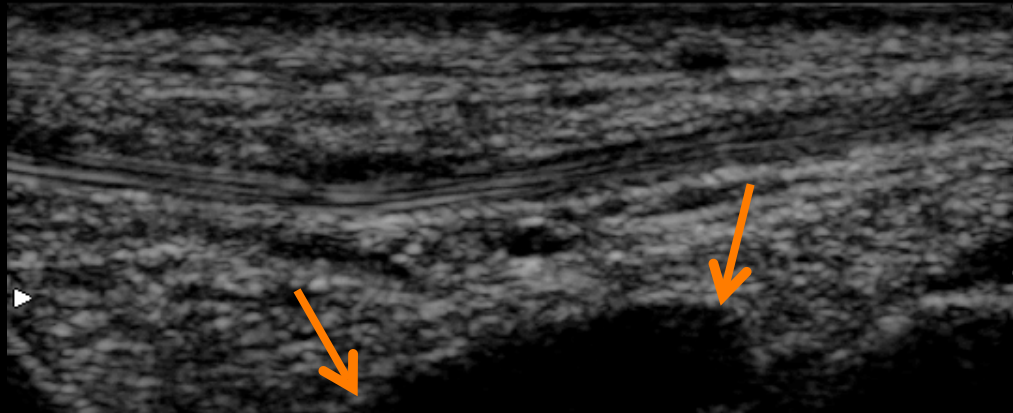
Transversal



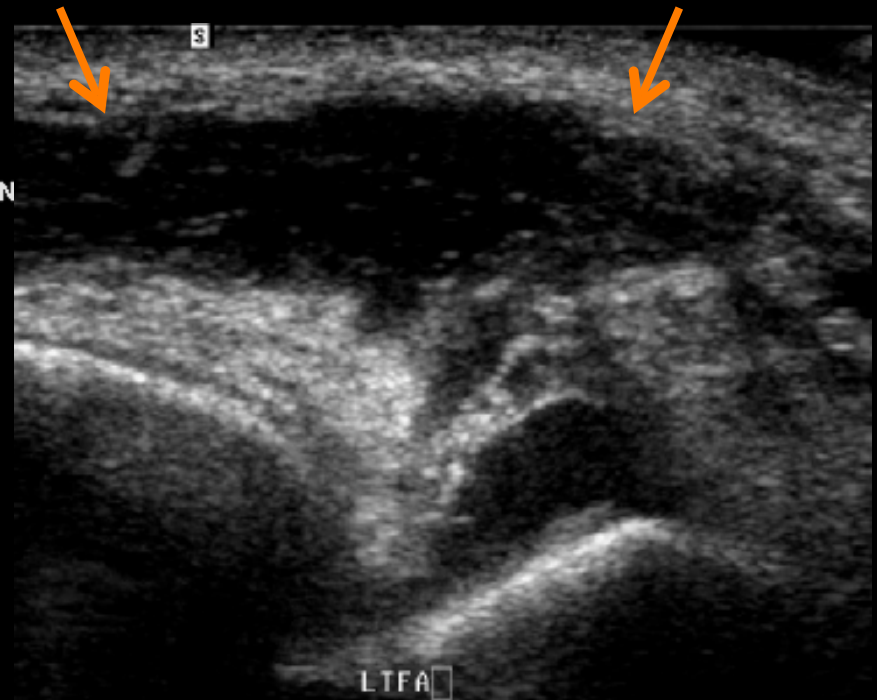
**Avulsion  
Osseuse  
Calcanéenne  
Du LFC**



# Lésions associées



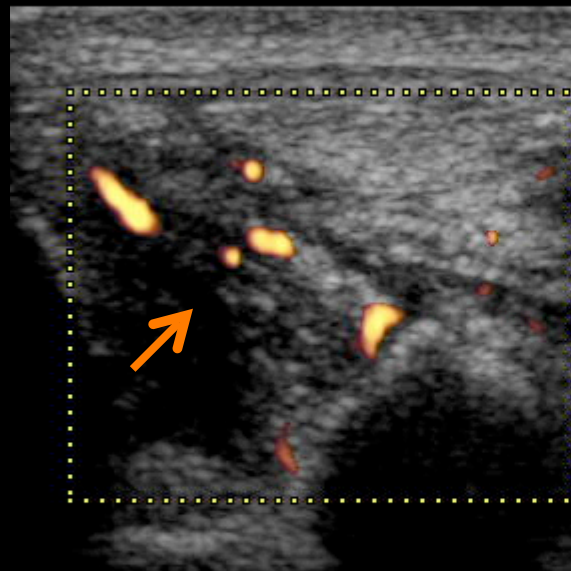
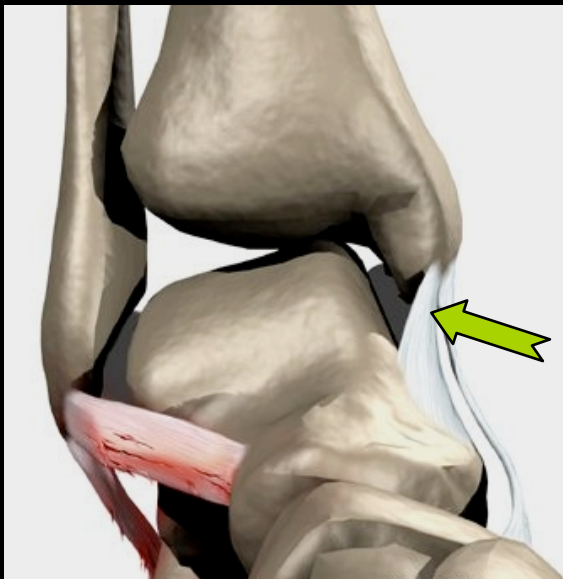
**Epanchement  
de la Talo Crurale**



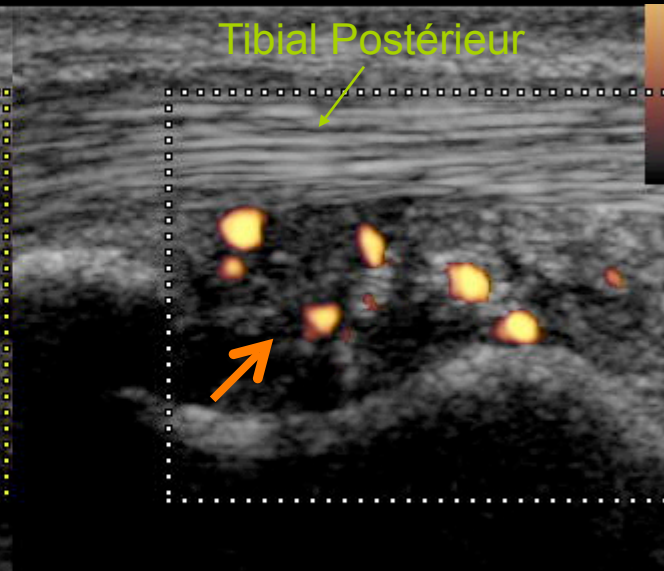
**Hématome Sous Cutané**



# Conflit médial

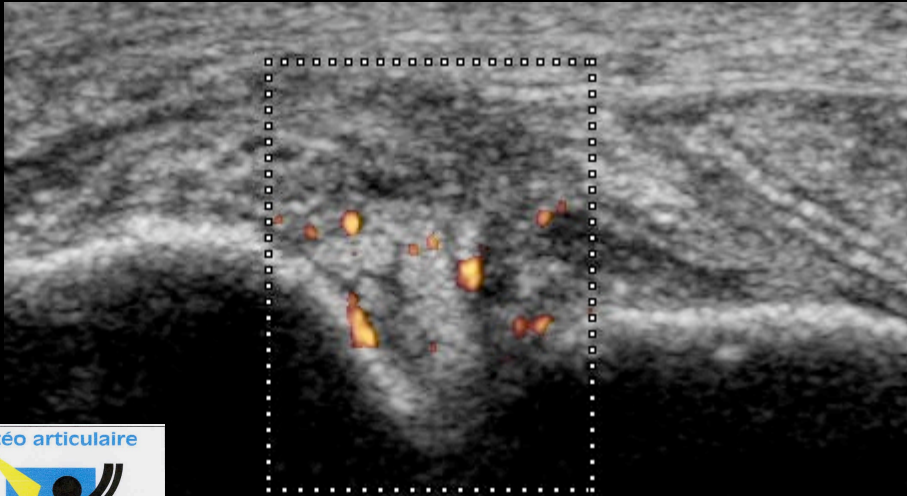
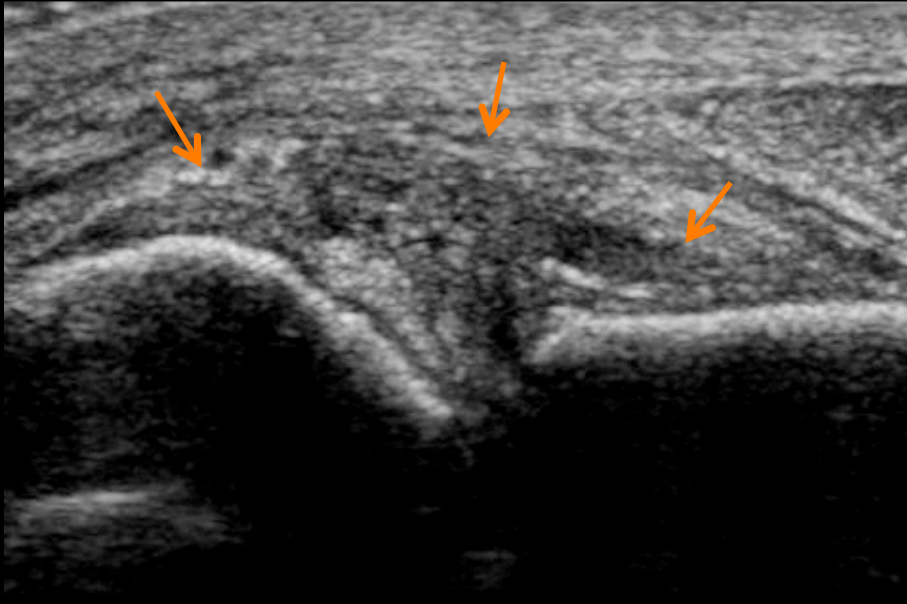


Longitudinal



Transversal

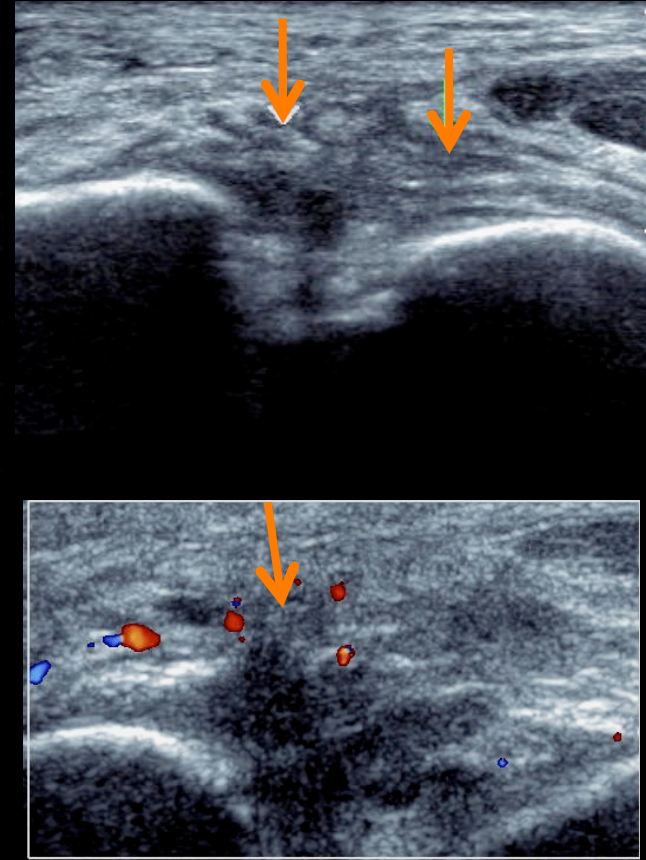
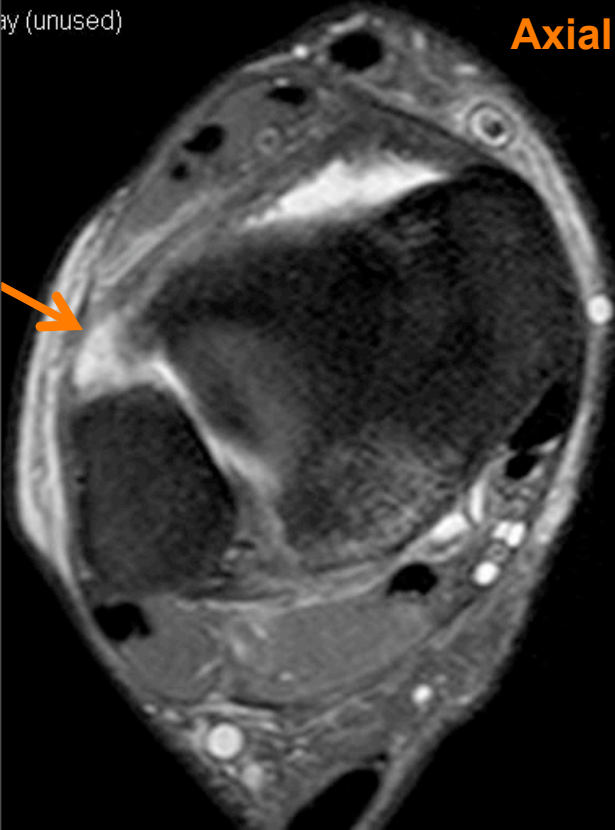
# Lésion du LTFAD



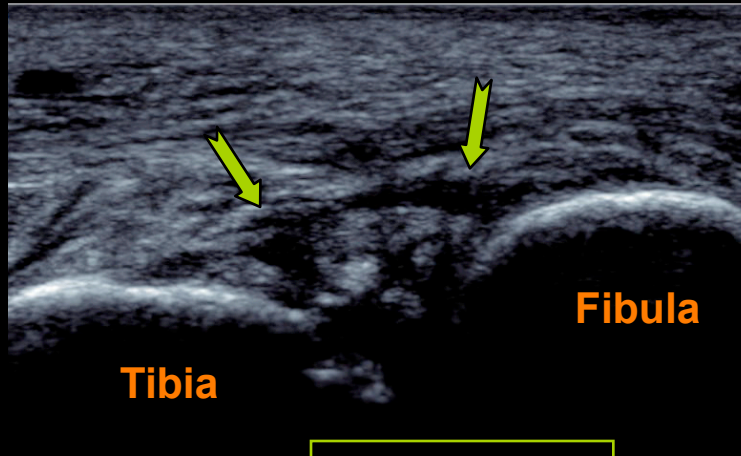
# Lésion du LTFAD

ay (unused)

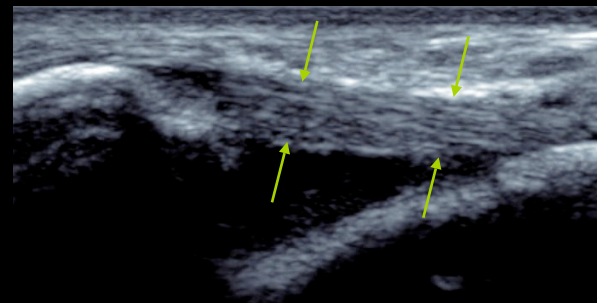
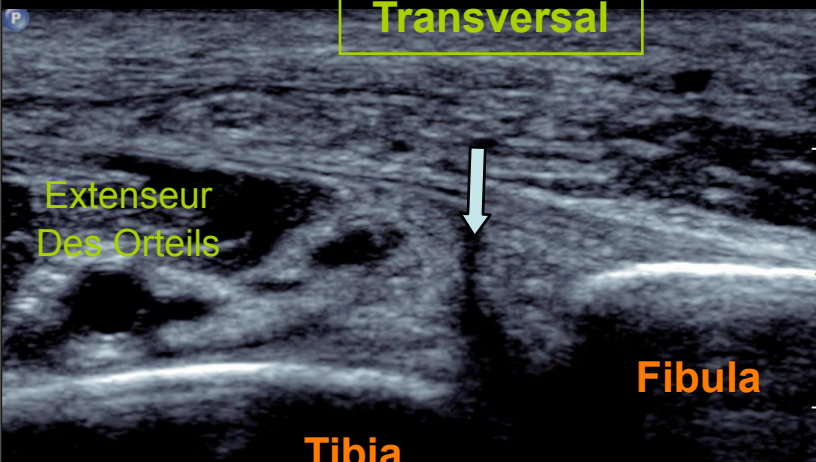
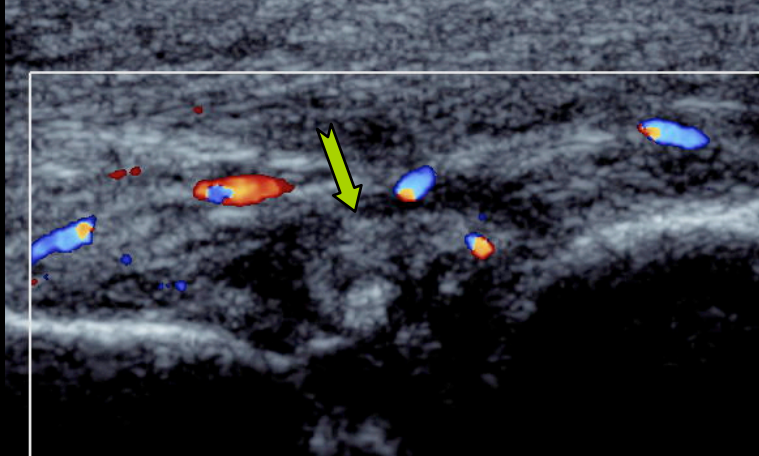
IRM  
Axial T2 Fat Sat



# Lésion du LTFAD

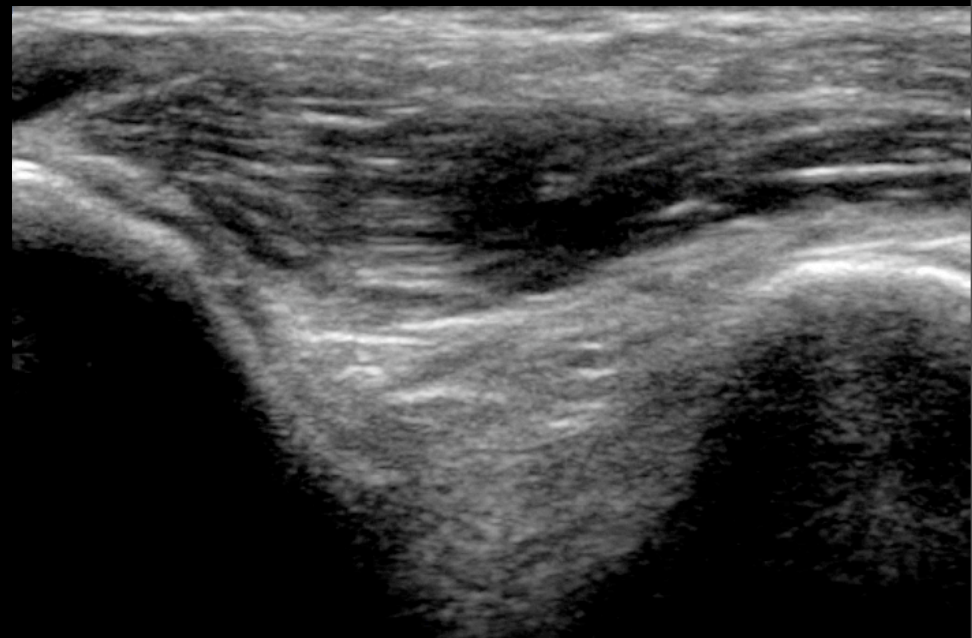
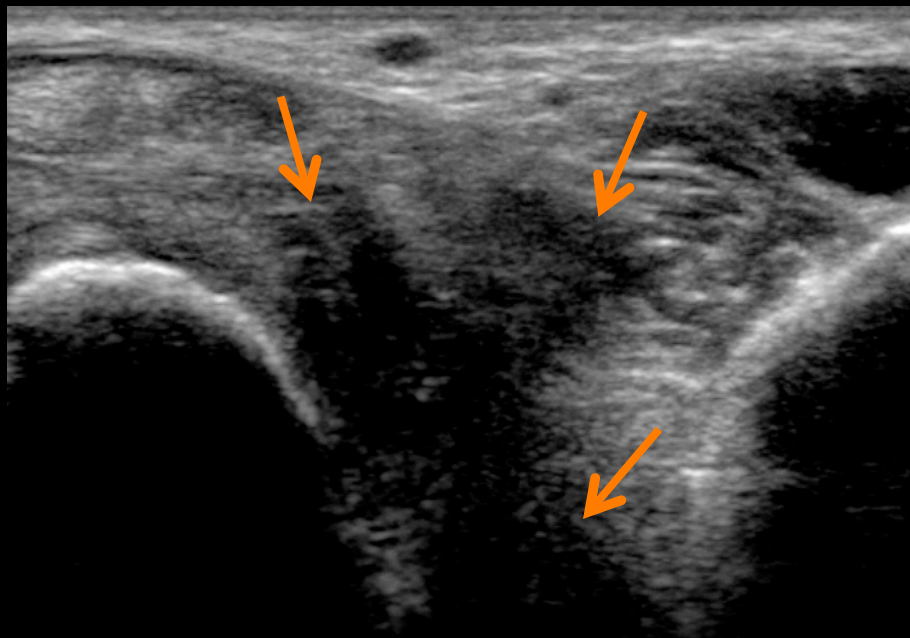


Transversal



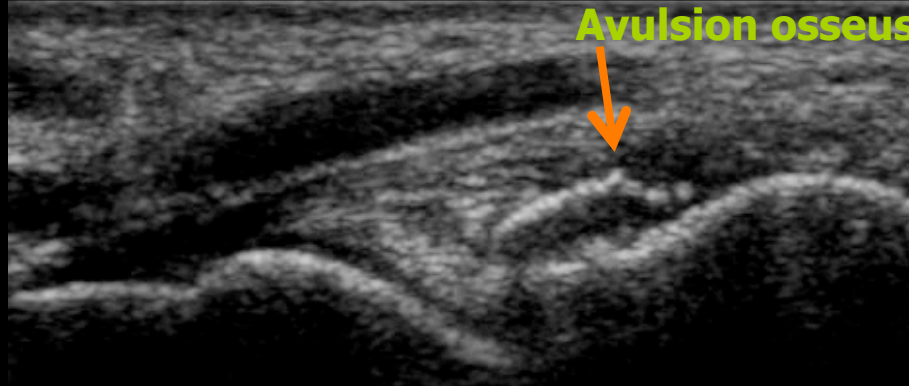
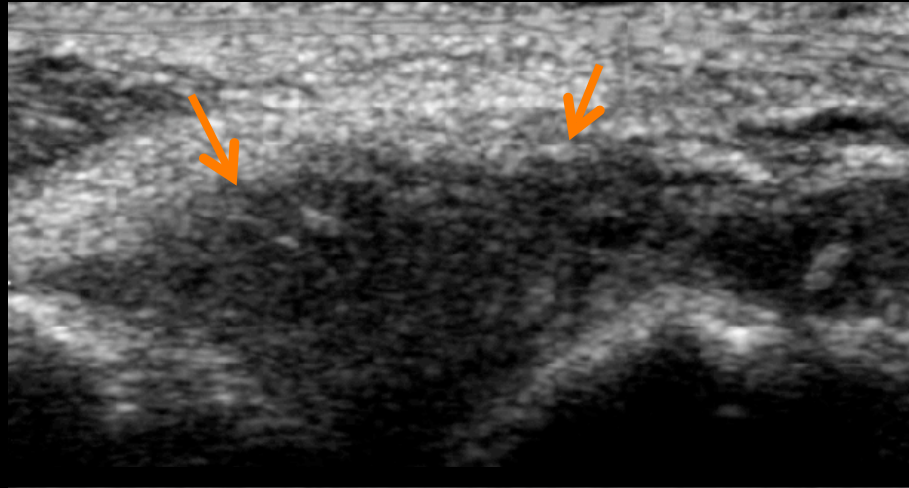
LTFAD Normal

# Atteinte du Sinus du Tarse



**Côté Opposé  
NORMAL**

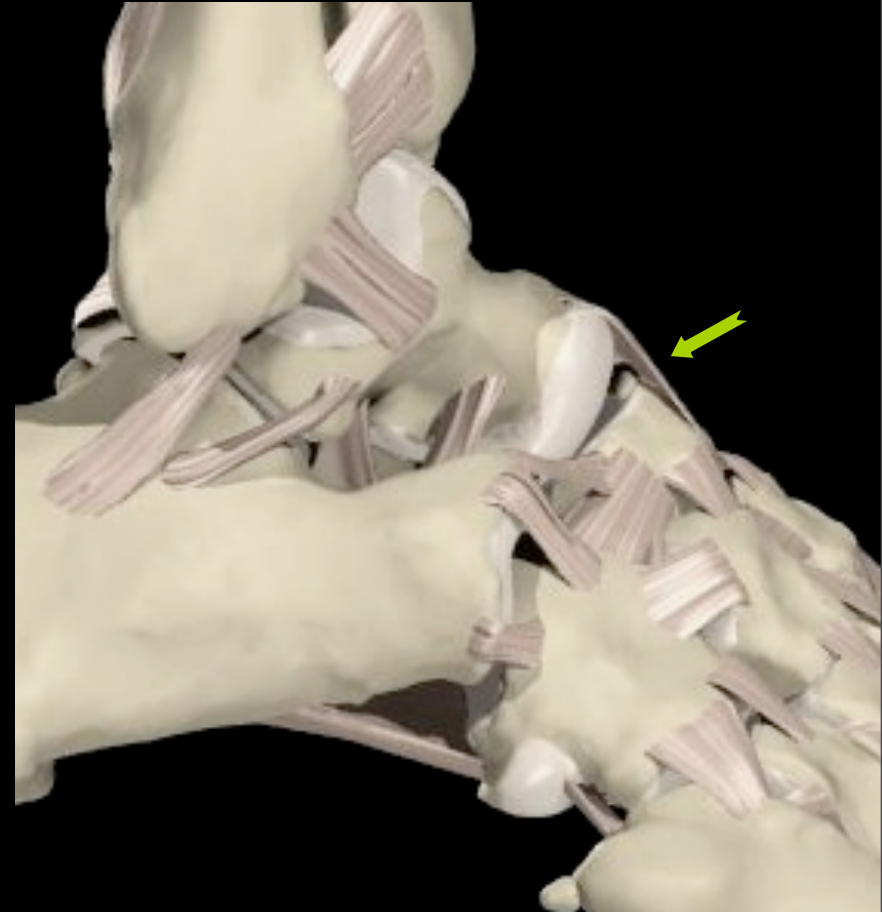
# Lésion du ligament Talo Naviculaire Supérieur



Avulsion osseuse

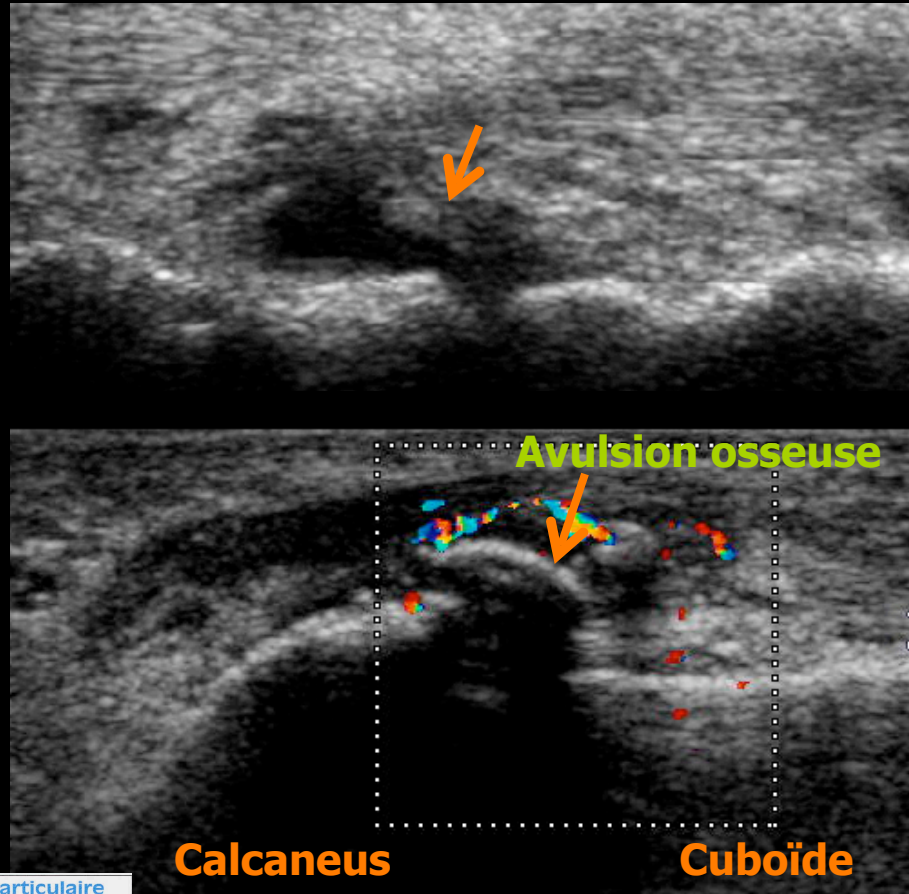
Talus

Os Naviculaire

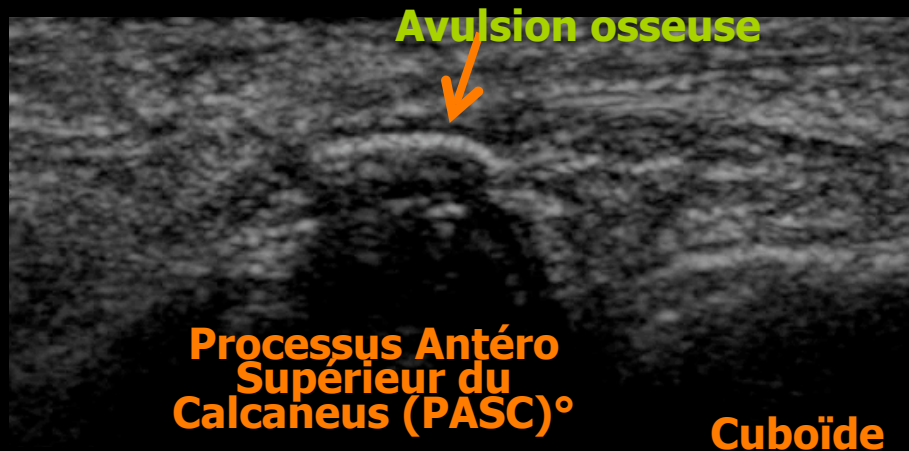
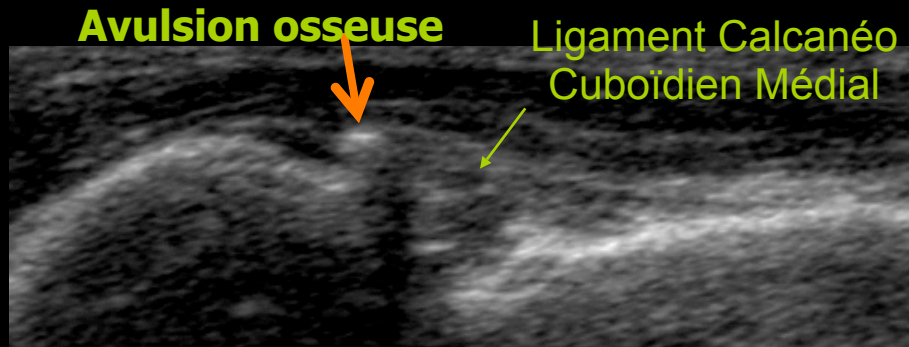


# Lésion du ligament Calcanéo Cuboïdien

## Hémarthrose du CHOPART



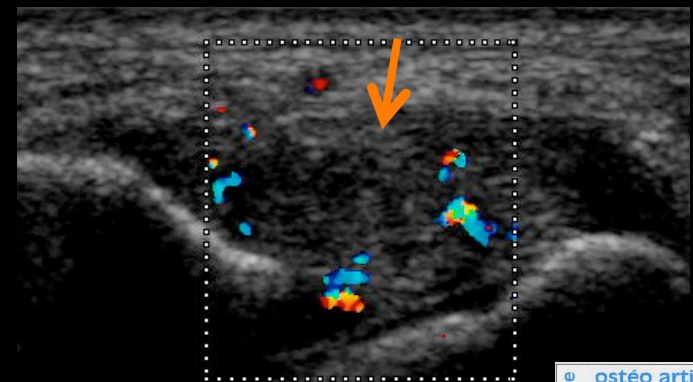
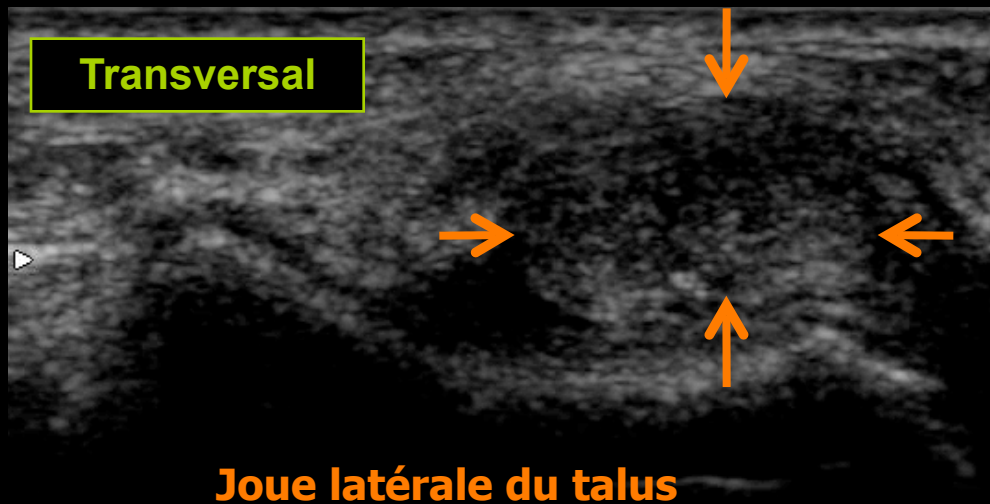
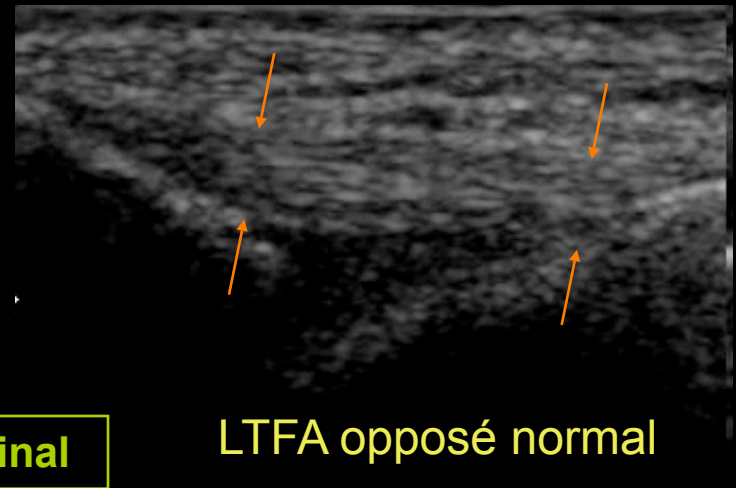
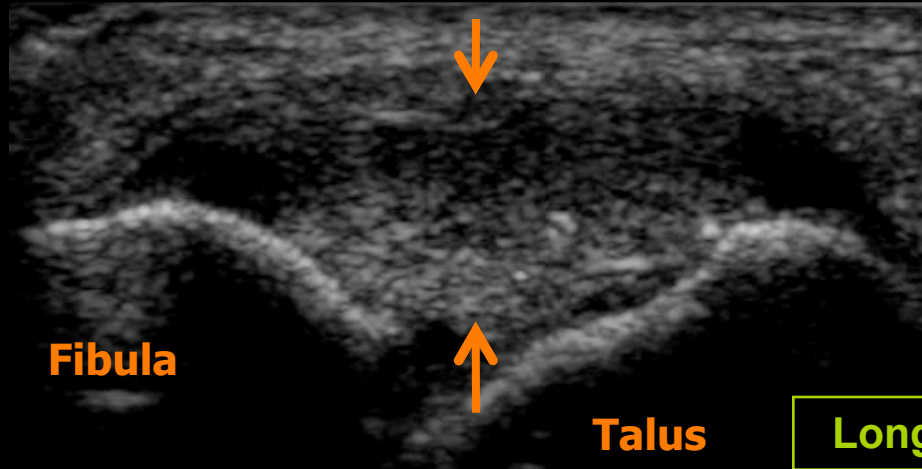
# Lésion du ligament bifurqué



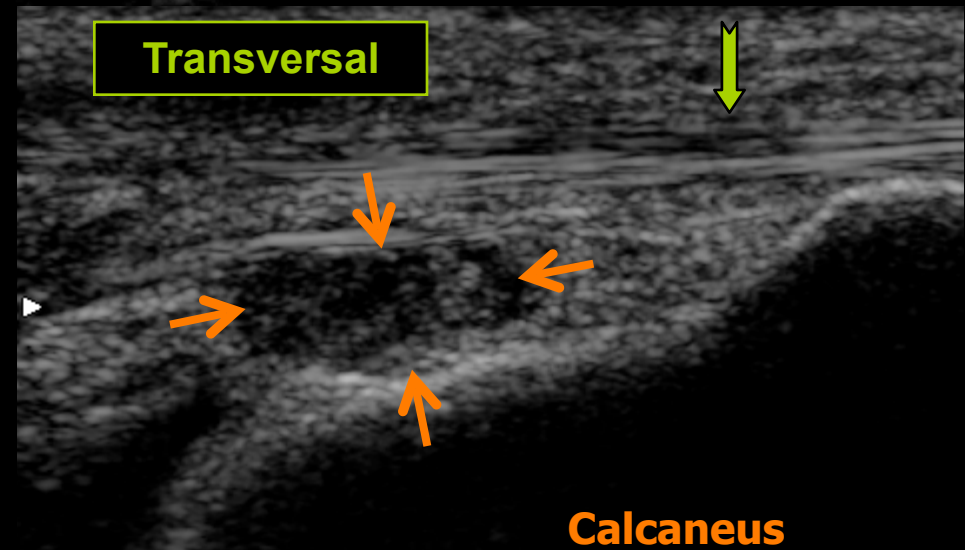
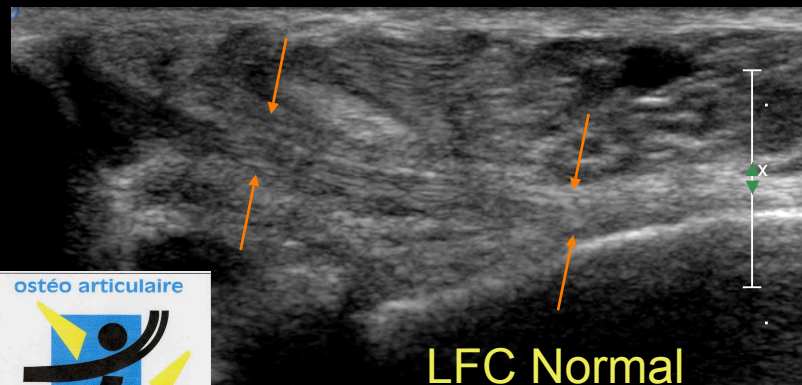
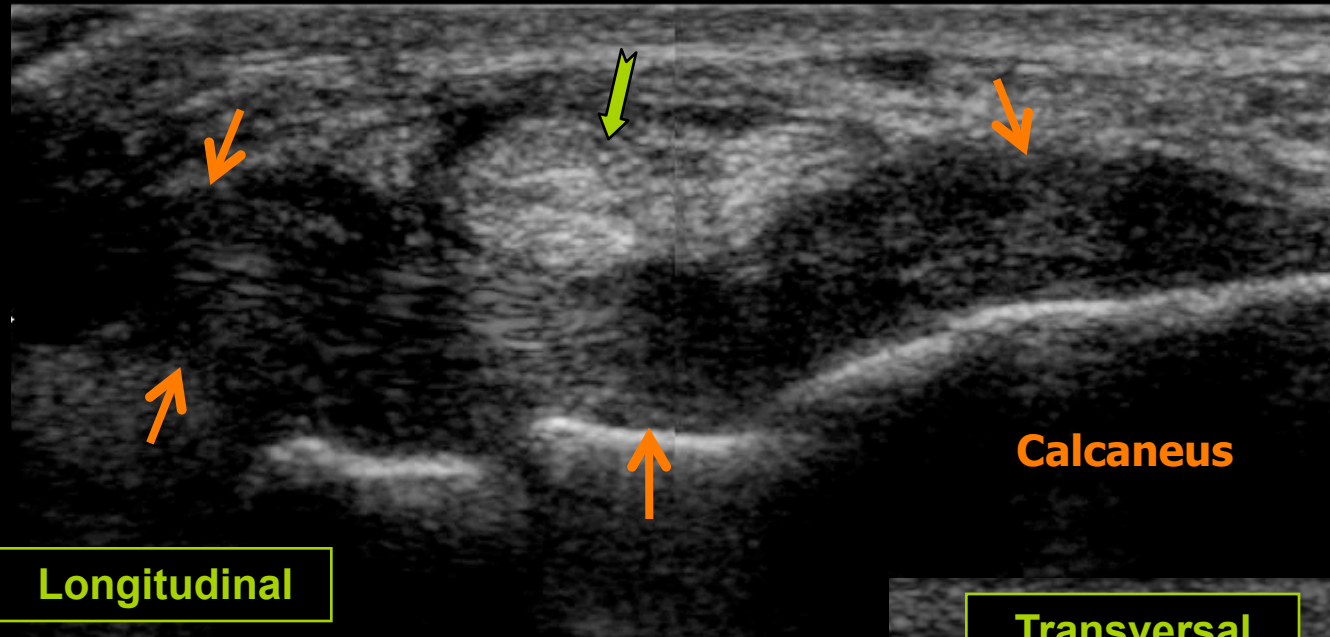


# Contrôle évolutif de la cicatrisation

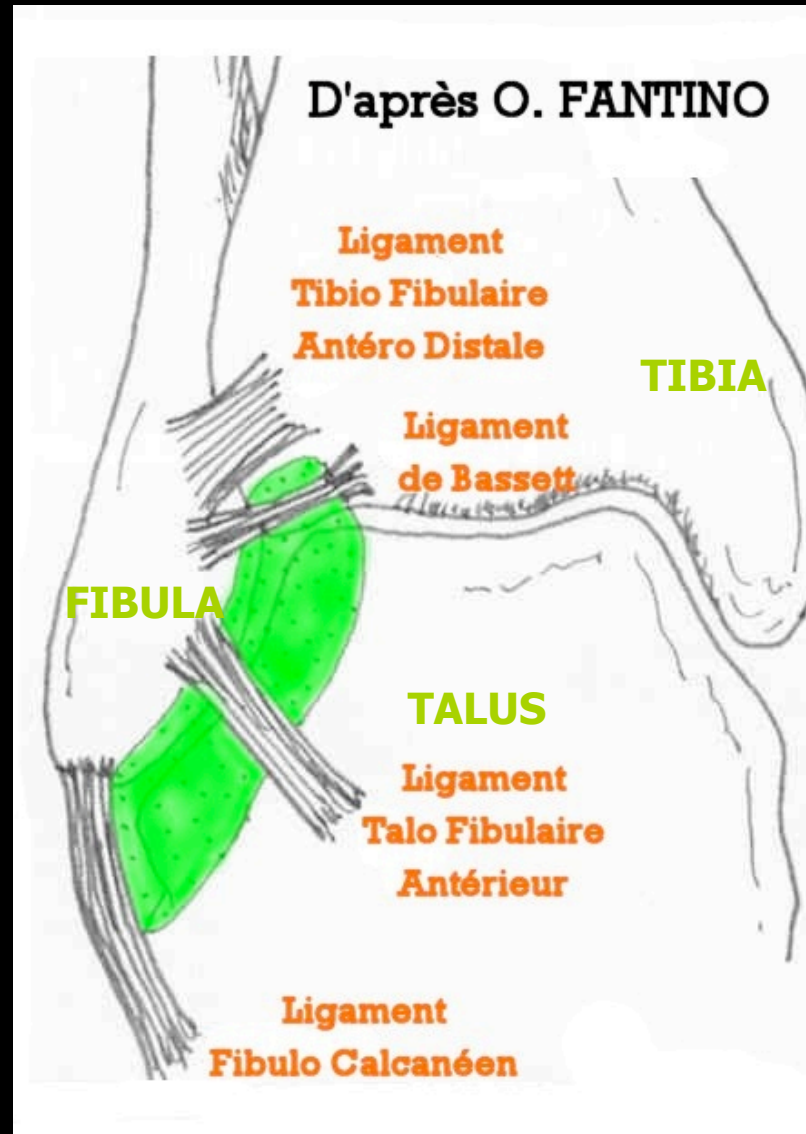
LTFA cicatrisé (trauma + 1 mois)



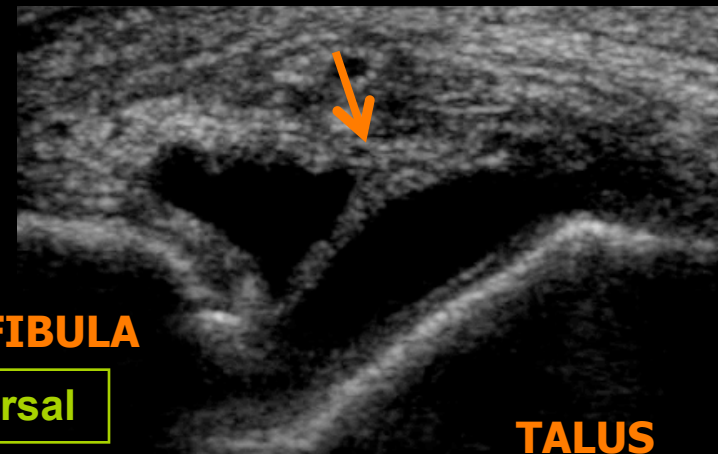
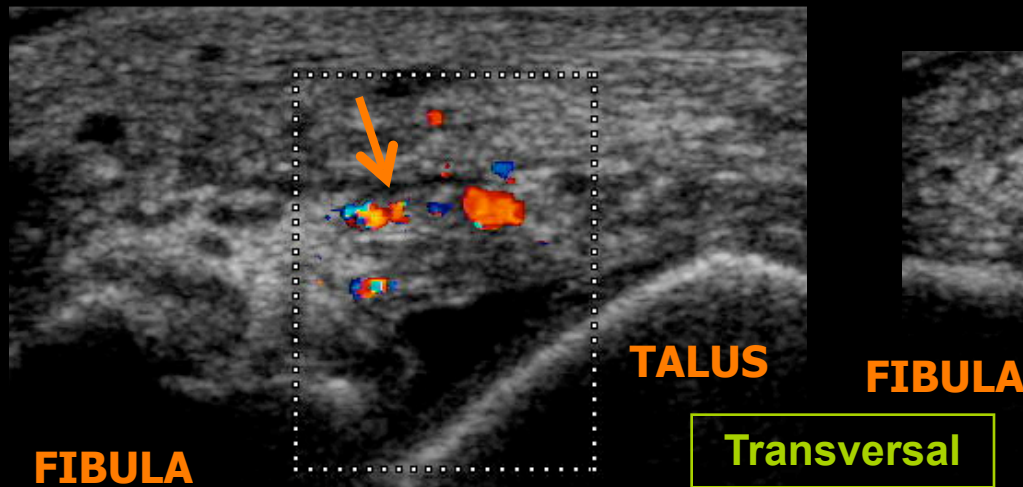
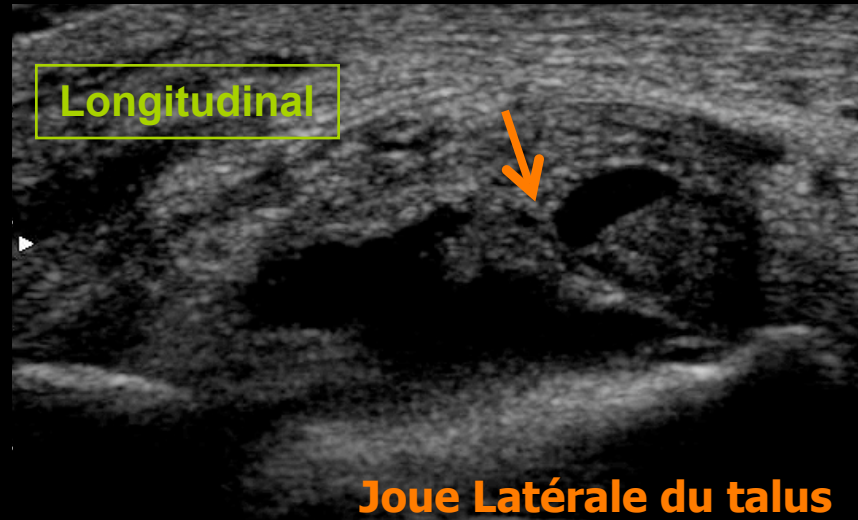
# Contrôle évolutif de la cicatrisation



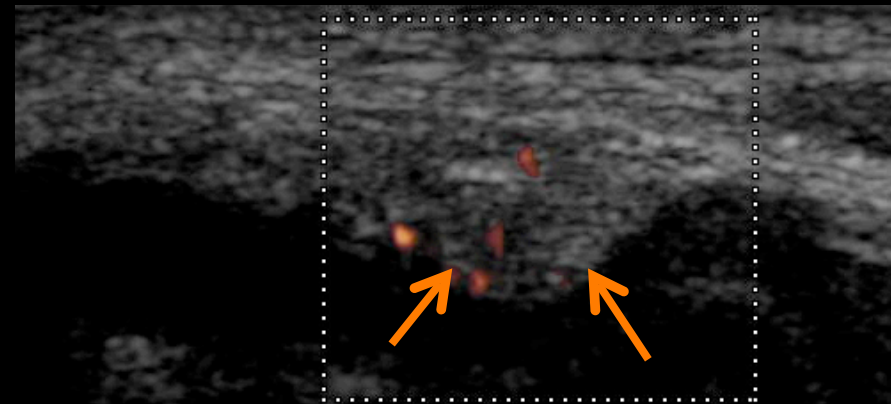
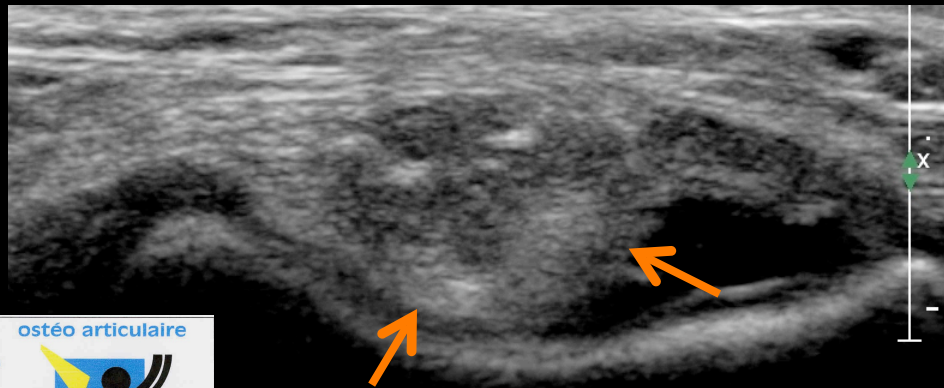
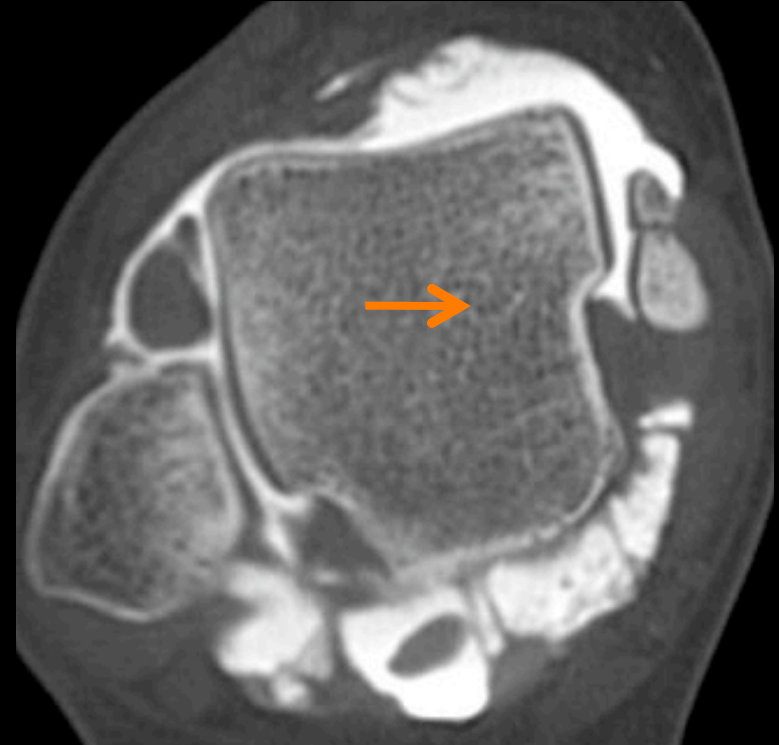
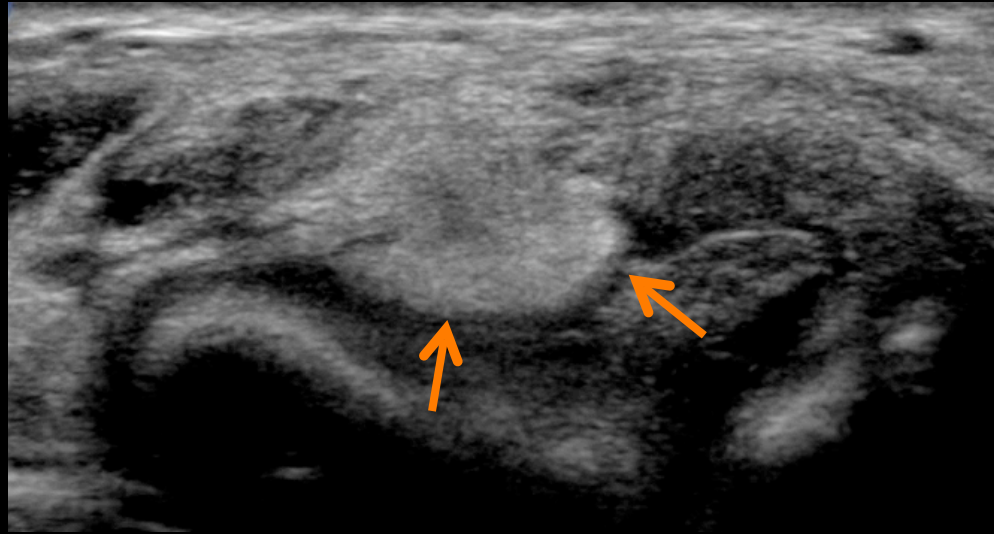
# Gouttière Antéro Latérale



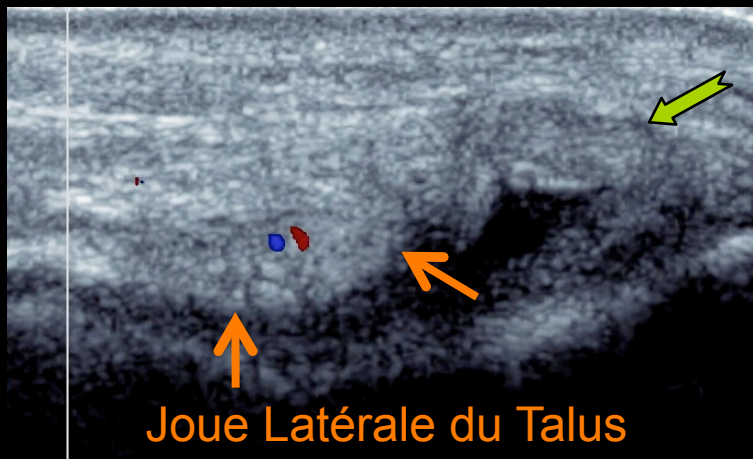
# Aspect fibrillaire du syndrome d'interposition



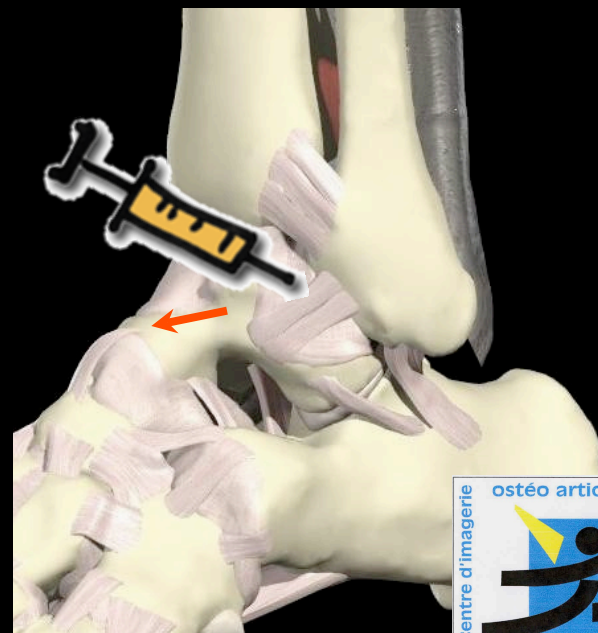
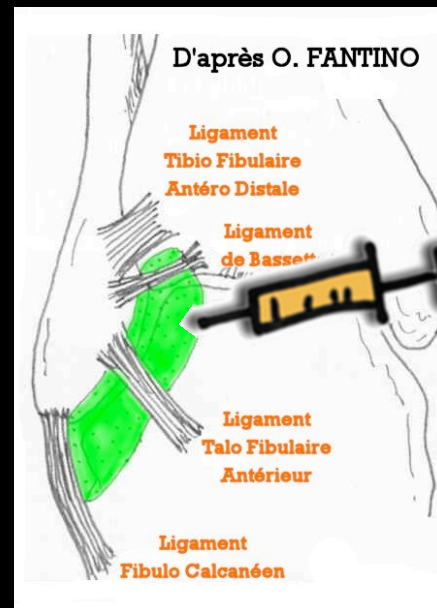
# Aspect nodulaire du syndrome d'interposition



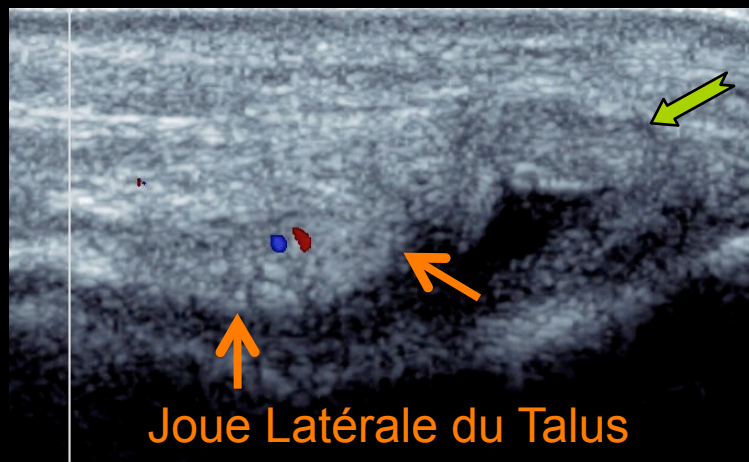
# Infiltration d'un Conflit Antéro Latéral



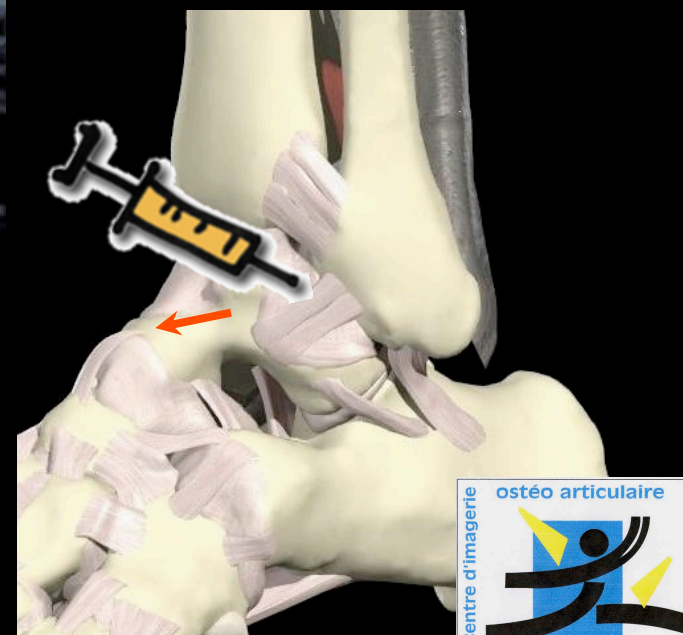
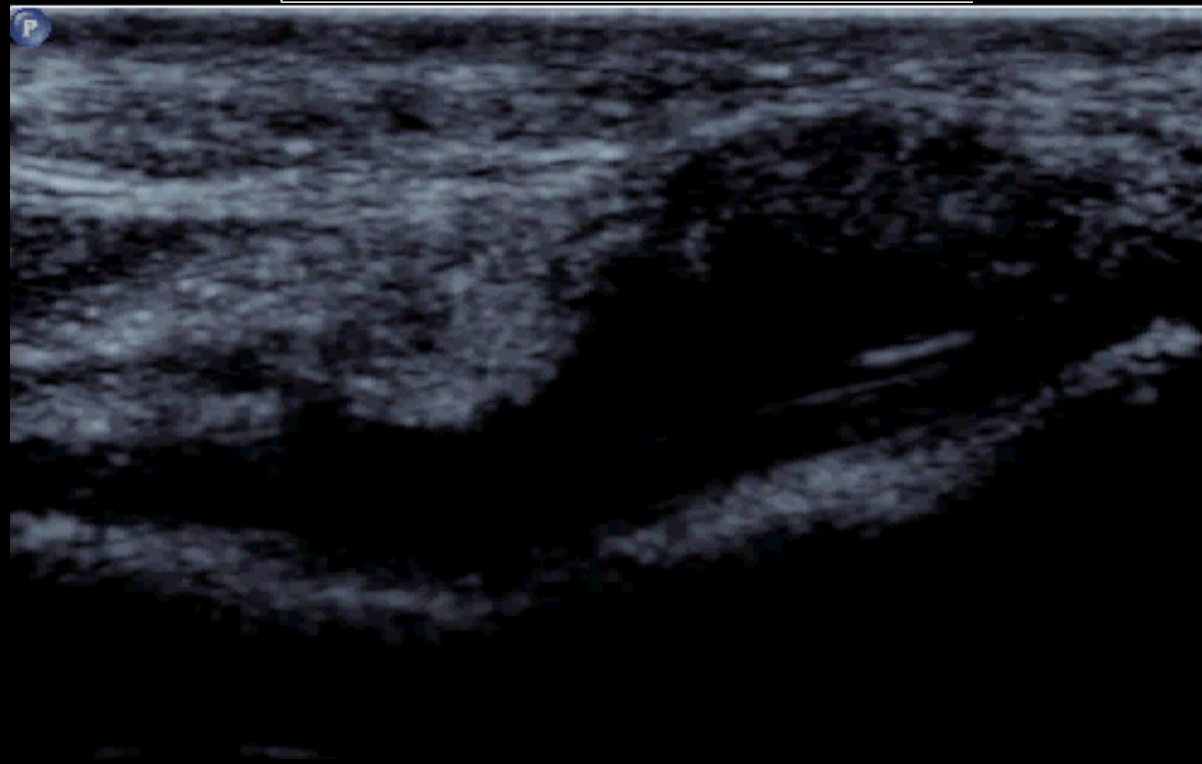
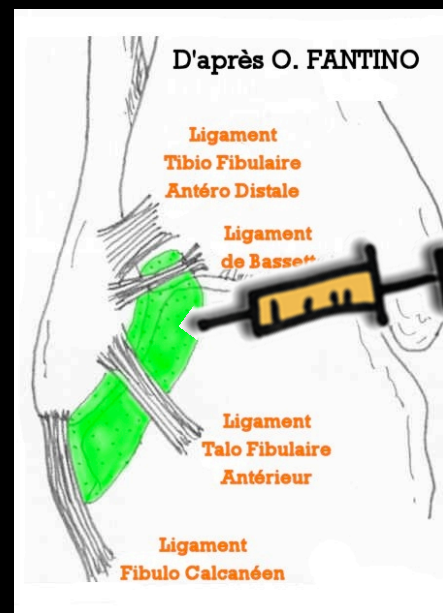
LTFA



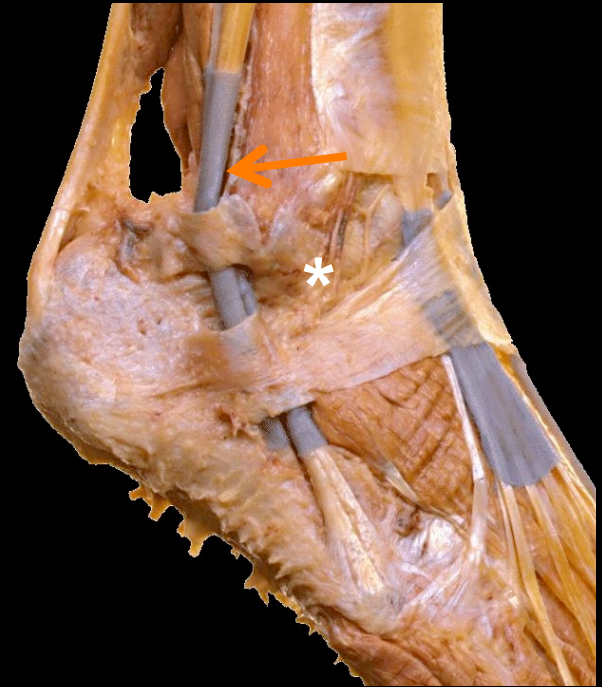
# Infiltration d'un Conflit Antéro Latéral



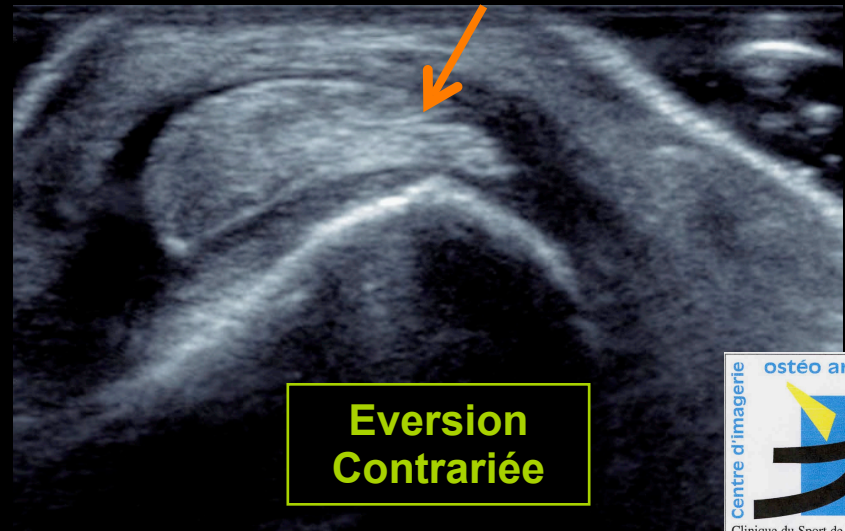
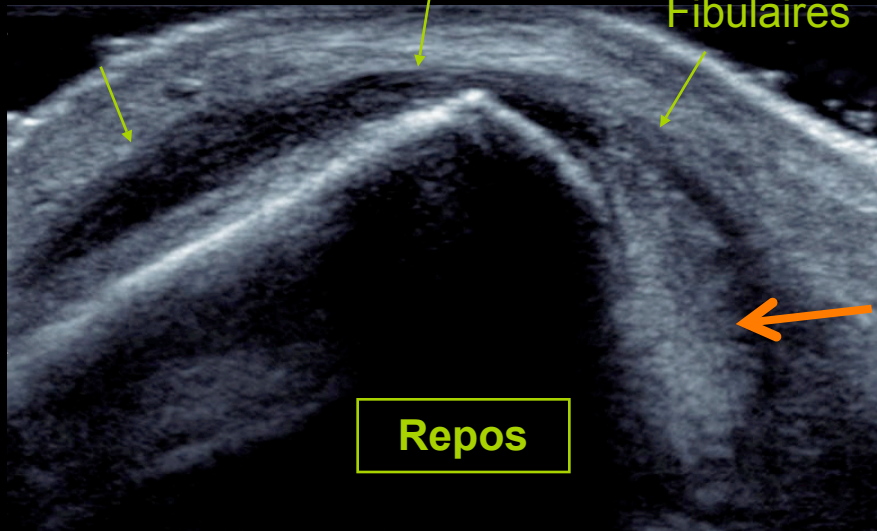
LTFA



# La Luxation du Long Fibulaire

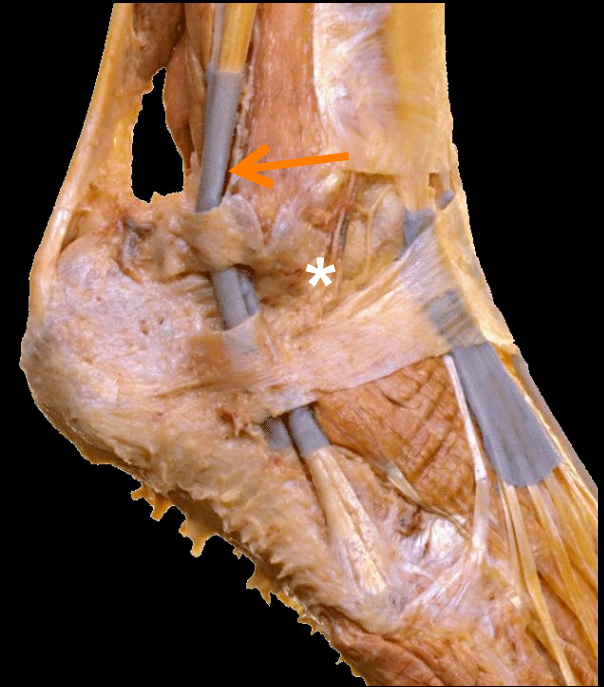


Retinaculum Supérieur des Fibulaires



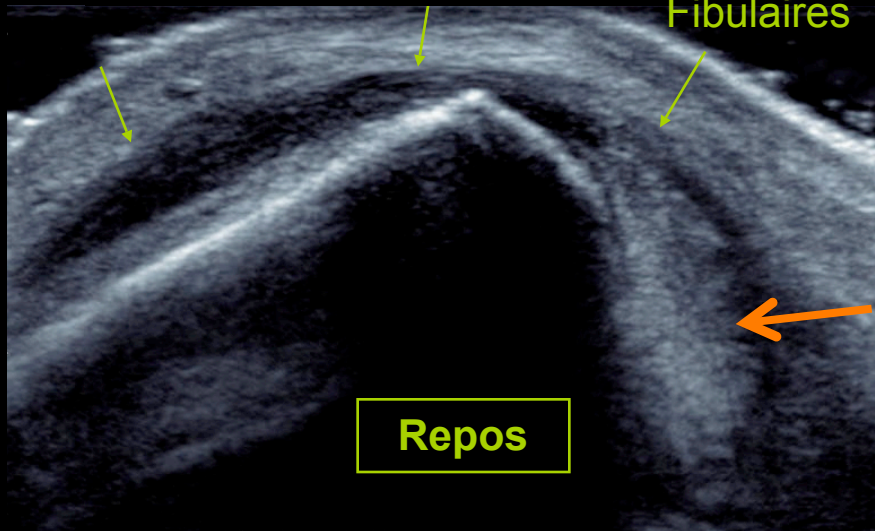


# La Luxation du Long Fibulaire

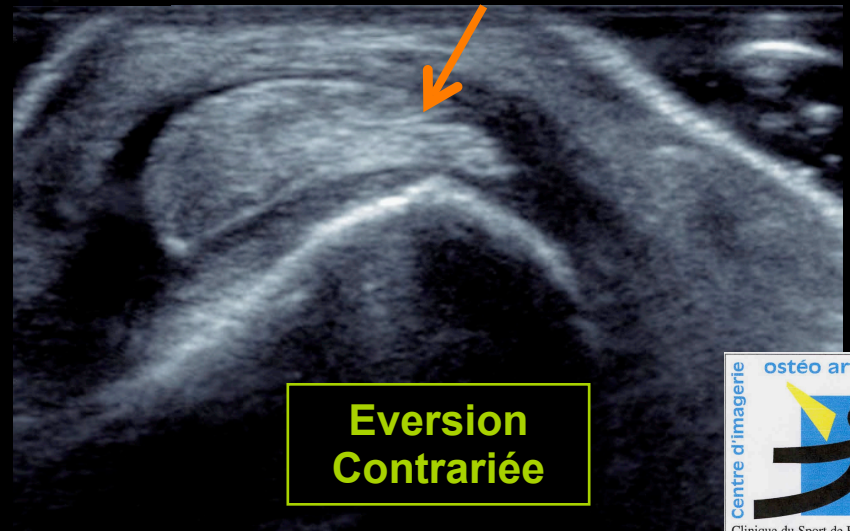


Retinaculum Supérieur des Fibulaires

JF

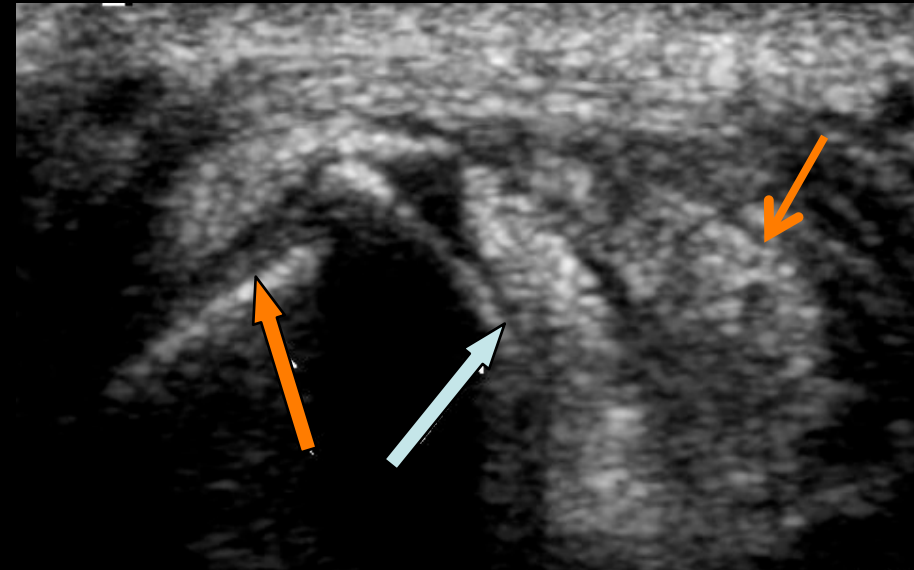
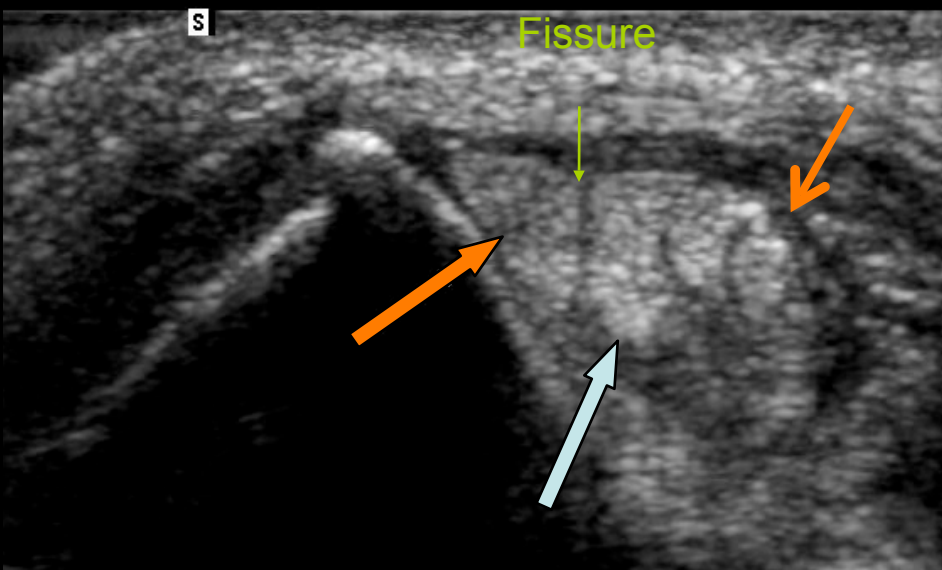


Repos



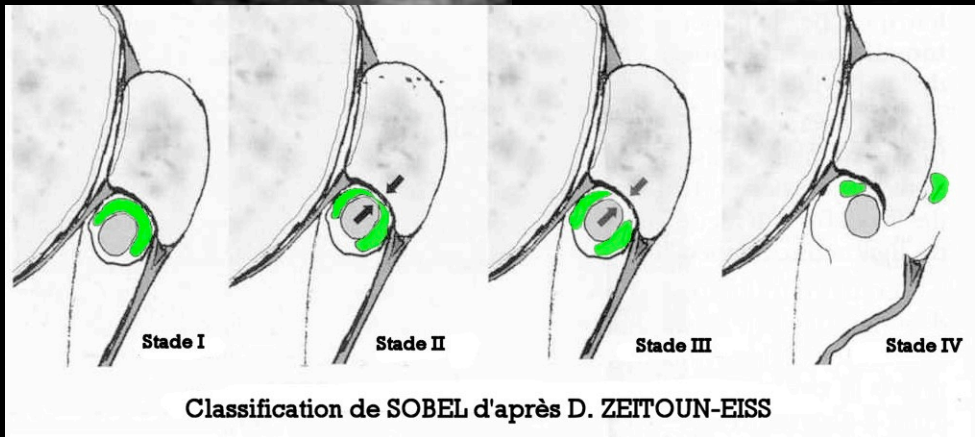
Eversion  
Contrariée

# Fissuration longitudinale avec luxation partielle du Court Fibulaire



Repos

Eversion  
Contrariée



# Recherche de Complications

- Instabilité résiduelle  $\Rightarrow$  Clichés en stress (TELOS)

